

# VILLAGE of PITTSFORD HISTORIC PRESERVATION BOARD



## **Members:**

Jeffrey Pollock, **Chair**  
Kendra Evans  
Daniel Olson  
William McBride  
Cristina Lanahan

**Attorney:** Jeff Turner

**Building Inspector:** Steve Lauth

**Rec. Sec.:** Meghan Arscott

## **HISTORIC PRESERVATION BOARD MEETING MONDAY, MARCH 27, 2023, @ 5:30 PM**

### **\*Tentative Agenda\***

This agenda is subject to change in the number of applications, order of applications, and/or at the discretion of the Chairperson.

1. Westport Crossing - C of A Conditions

### **Public Q & A**

### **Member Items**

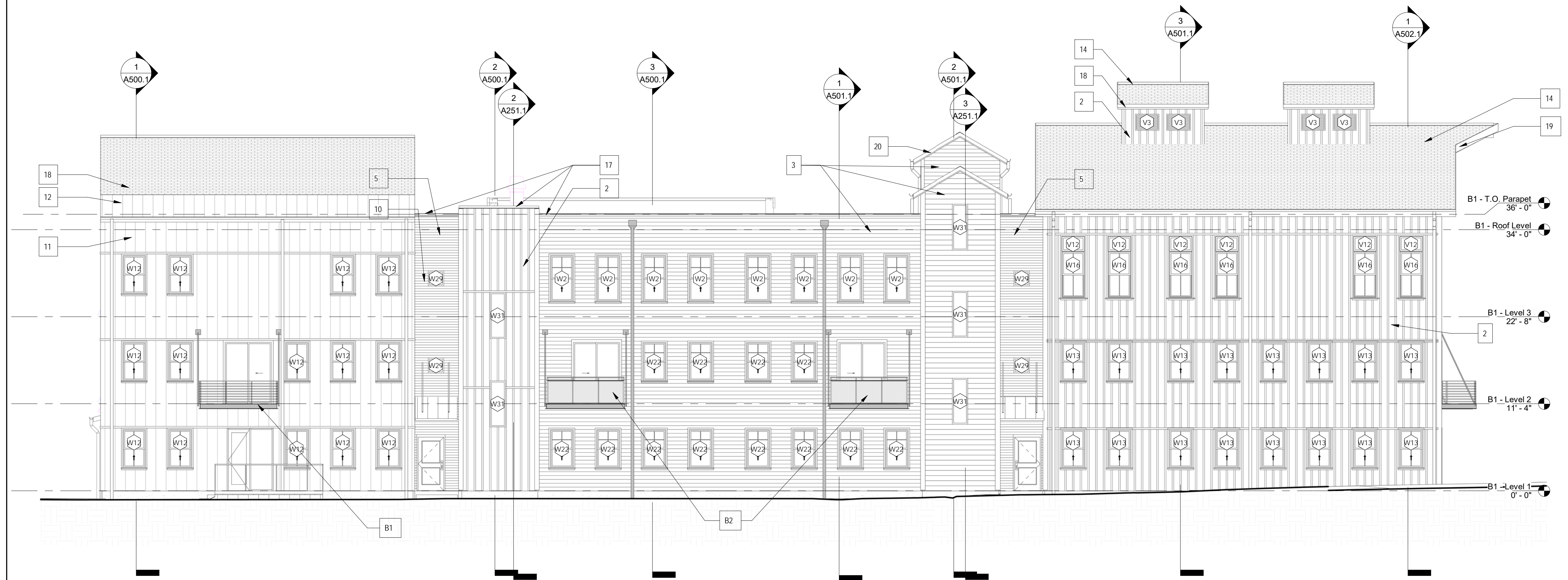
**Motion by Member McBride and seconded by Member Evans** to approve the Certificate of Approval for the 75 Monroe Avenue project based on the plans presented which provide for a mass and scale reduction of 34.5% from the project plans presented 8 years ago with the following conditions: (1) the windows of the project will have a reasonable number of different muntin patterns, (2) the windows of the project will have a reasonable reduction in the number of casement windows, (3) the windows of the project shall have a reasonable number of muntin and sash frame colors, (4) the windows of the project shall be installed with traditionally appropriate casings, (5) there shall be a reasonable number of arch-framed windows on the brick portion of project buildings and (6) the construction drawings submitted for the purpose of obtaining a building permit shall be provided by the Building Department to the Historic Preservation Board for the Historic Preservation Board's review.

**Vote:** Pollock – yes; McBride – yes; Lanahan – yes; Evans – yes; Olson – yes; *Motion Carries.*

This decision has been filed in the Village Clerk's office on October 18, 2022.



1 BLDG 1 - NORTH ELEVATION  
A200.1 1/8" = 1'-0"



2 BLDG 1 - SOUTH ELEVATION  
A200.1 1/8" = 1'-0"

### EXTERIOR MATERIALS LEGEND

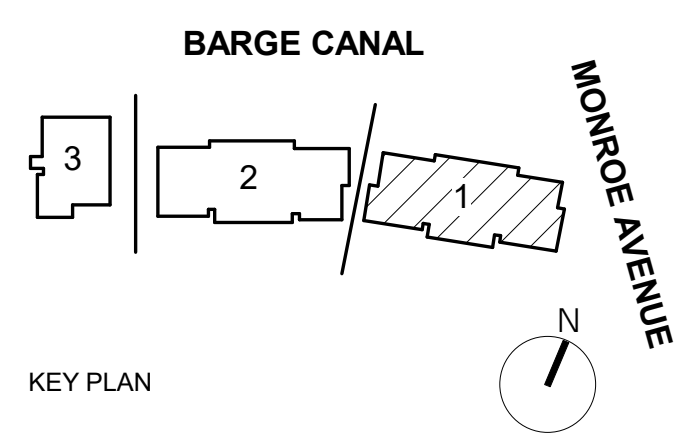
ALL MATERIALS NOT NECESSARILY USED

- GENERAL NOTES:  
 1) Window Exterior Trim to match wall color, Exceptions are Light grey Siding and Parklex siding  
 2) Gabled roofs have black metal half round gutters and round down spouts  
 3) Flat roofs will have galvanized metal scuppers and round down spouts  
 4) Coping caps will be black metal on all walls with flat roofs. Exceptions are noted  
 5) Horizontal and vertical wall trim to match the wall cladding color. Exceptions are noted  
 6) Wall corner trim is an 8" wide board per face and to match wall material for horizontal siding and vertical Board and Baton Siding, color to match wall color  
 7) Wall vents for ERV(6" Dia) and Dryer (4" Dia) are not visible but will be present for every residential unit  
 8) Balcony details are on Sheet AT003 : B1-10' WIDE , B2-10' WIDE , B3-7' WIDE

MATERIAL IDENTIFICATION #:	MATERIAL BASIS OF DESIGN PRODUCT:
1	BOARD & BATTEN VERTICAL SIDING, 8" MODULE, WHITE; MANUFACTURER: JAMES HARDIE PRODUCT: HARDIE® PANEL VERTICAL SIDING SMOOTH
2	BOARD & BATTEN VERTICAL SIDING, 8" MODULE, RED; MANUFACTURER: JAMES HARDIE PRODUCT: HARDIE® PANEL VERTICAL SIDING SMOOTH
3	HORIZONTAL SIDING(FIBER CEMENT), 6" EXPOSURE, ARCTIC WHITE; MANUFACTURER: JAMES HARDIE PRODUCT: HARDIE® PLANK LAP SIDING SMOOTH
4	HORIZONTAL SIDING(FIBER CEMENT), 8" EXPOSURE, LIGHT GRAY; MANUFACTURER: JAMES HARDIE PRODUCT: HARDIE® PLANK LAP SIDING SMOOTH
5	HORIZONTAL SIDING(FIBER CEMENT), 4" EXPOSURE, BLACK ASH; MANUFACTURER: JAMES HARDIE PRODUCT: HARDIE® PLANK LAP SIDING SMOOTH
6	HORIZONTAL SIDING(FIBER CEMENT), 8" EXPOSURE, SAVANNAH GREEN; MANUFACTURER: JAMES HARDIE PRODUCT: HARDIE® PLANK LAP SIDING SMOOTH
7	HORIZONTAL SIDING(FIBER CEMENT), 8" EXPOSURE, BLUE; MANUFACTURER: JAMES HARDIE PRODUCT: HARDIE® PLANK LAP SIDING SMOOTH
8	RED BRICK VENEER; MANUFACTURER: GLEN-GERY PRODUCT: SIZE: UTILITY
9	BLACK BRICK VENEER; MANUFACTURER: GLEN-GERY PRODUCT: SIOUX CITY VINTAGE BLACK VELOUR SIZE: UTILITY
10	FAUX WOOD SIDING(PRESSED FIBER PANEL); MANUFACTURER: Parklex PRODUCT:
11	STANDING SEAM METAL SIDING, BLACK/GRAY; MANUFACTURER: PRODUCT:
12	FLAT SEAM METAL ROOFING; MANUFACTURER: PRODUCT:
13	WALL COPING #3 STANDING SEAM METAL ROOFING; MANUFACTURER: PRODUCT:
14	SHINGLE ROOFING; MANUFACTURER: PRODUCT:
15	HALF ROUND GALVANIZED STL GUTTER & PIPE DOWNSPOUTS; MANUFACTURER: PRODUCT:
16	HALF ROUND BLACK STL GUTTER & PIPE DOWNSPOUTS; MANUFACTURER: PRODUCT:
17	WALL COPING #1 (METAL) BLACK; MANUFACTURER: PRODUCT:
18	FACIA TRIM #1 6" BLACK; MANUFACTURER: PRODUCT:
19	FACIA TRIM #2 12" BLACK; MANUFACTURER: PRODUCT:
20	FACIA TRIM #3 6" WHITE; MANUFACTURER: PRODUCT:
21	FACIA TRIM #4 12" WHITE; MANUFACTURER: PRODUCT:



### ARCHITECTURAL CODE REVIEW SET



Pittsford Canalside Properties, LLC  
**WESTPORT CROSSING**  
 75 MONROE AVE  
 PITTSFORD, NY 14534

REV. #	DESCRIPTION	DATE

JOB NO.	2101
SCALE	As indicated
ISSUE DATE	03/09/2023
DRAWN BY	JB
CHECKED BY	DS

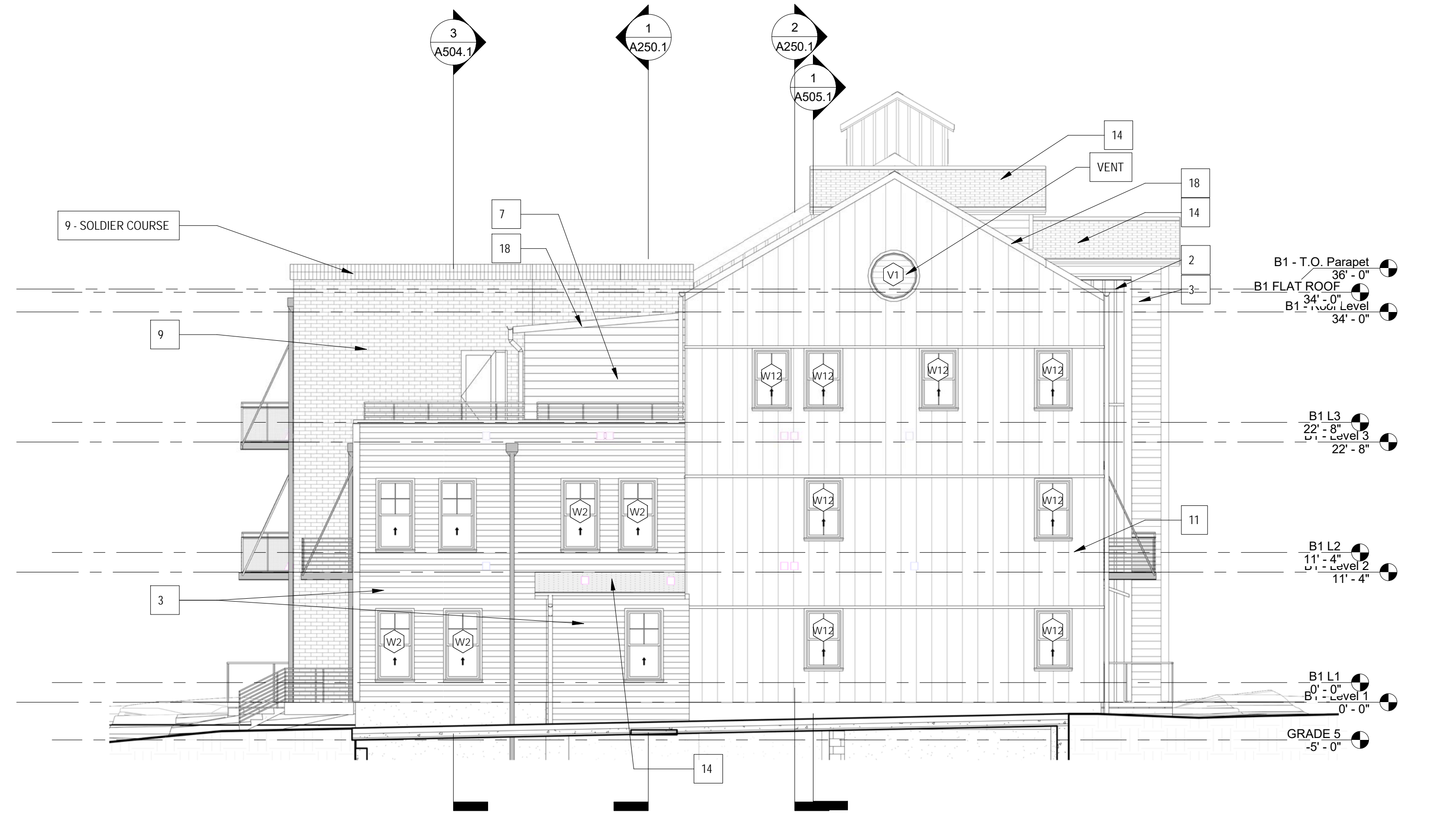
THIS IS A SINGLE SHEET OF A COHESIVE SET OF CONSTRUCTION DOCUMENTS (INCLUDING DRAWINGS AND SPECIFICATIONS). INTERPRETATION OF THE INFORMATION AS PRESENTED SHOULD BE BASED ON THE ENTIRE SET OF DOCUMENTS.

### DRAWING TITLE

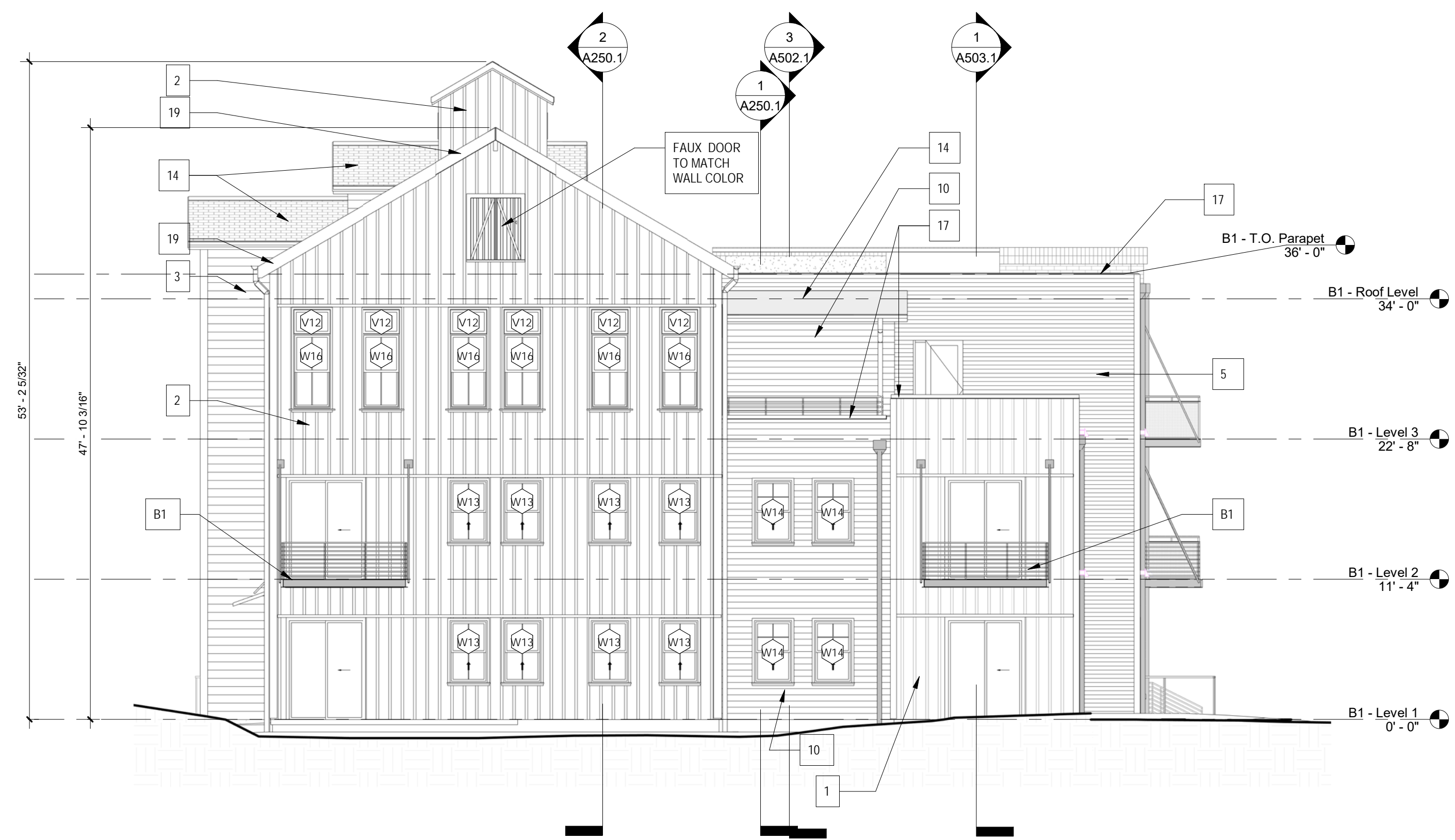
BLDG 1 - EXTERIOR ELEVATIONS

**A200.1**

ISSUED FOR ARCHITECTURAL AND CODE REVIEW



2 BLDG 1 - WEST ELEVATION  
A201.1 1/8" = 1'-0"



1 BLDG 1 - EAST ELEVATION  
A201.1 1/8" = 1'-0"

### EXTERIOR MATERIALS LEGEND

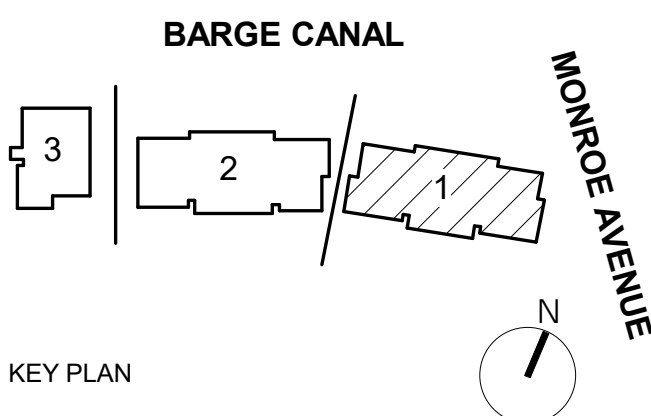
ALL MATERIALS NOT NECESSARILY USED

- GENERAL NOTES:  
 1) Window Exterior Trim to match wall color, Exceptions are Light grey Siding and Parklex siding  
 2) Gabled roofs have black metal half round gutters and round down spouts  
 3) Flat roofs will have galvanized metal scuppers and round down spouts  
 4) Coping caps will be black metal on all walls with flat roofs. Exceptions are noted  
 5) Horizontal and vertical wall trim to match the wall cladding color. Exceptions are noted  
 6) Wall corner trim is an 8" wide board per face and to match wall material for horizontal siding and vertical Board and Baton Siding, color to match wall color  
 7) Wall vents for ERV(6" Dia) and Dryer (4" Dia) are not visible but will be present for every residential unit  
 8) Balcony details are on Sheet AT003 : B1 -10' WIDE , B2 -10' WIDE , B3 -7' WIDE

MATERIAL IDENTIFICATION #:	MATERIAL BASIS OF DESIGN PRODUCT:
1	BOARD & BATTEN VERTICAL SIDING, 8" MODULE, WHITE; MANUFACTURER: JAMES HARDIE PRODUCT: HARDIE® PANEL VERTICAL SIDING SMOOTH
2	BOARD & BATTEN VERTICAL SIDING, 8" MODULE, RED; MANUFACTURER: JAMES HARDIE PRODUCT: HARDIE® PANEL VERTICAL SIDING SMOOTH
3	HORIZONTAL SIDING(FIBER CEMENT), 8" EXPOSURE, ARCTIC WHITE; MANUFACTURER: JAMES HARDIE PRODUCT: HARDIE® PLANK LAP SIDING SMOOTH
4	HORIZONTAL SIDING(FIBER CEMENT), 8" EXPOSURE, LIGHT GRAY; MANUFACTURER: JAMES HARDIE PRODUCT: HARDIE® PLANK LAP SIDING SMOOTH
5	HORIZONTAL SIDING(FIBER CEMENT), 4" EXPOSURE, BLACK ASH; MANUFACTURER: JAMES HARDIE PRODUCT: HARDIE® PLANK LAP SIDING SMOOTH
6	HORIZONTAL SIDING(FIBER CEMENT), 8" EXPOSURE, SAVANNAH GREEN; MANUFACTURER: JAMES HARDIE PRODUCT: HARDIE® PLANK LAP SIDING SMOOTH
7	HORIZONTAL SIDING(FIBER CEMENT), 8" EXPOSURE, BLUE; MANUFACTURER: JAMES HARDIE PRODUCT: HARDIE® PLANK LAP SIDING SMOOTH
8	RED BRICK VENEER; MANUFACTURER: GLEN-GERY PRODUCT: SIZE: UTILITY
9	BLACK BRICK VENEER; MANUFACTURER: GLEN-GERY PRODUCT: SIOUX CITY VINTAGE BLACK VELOUR SIZE: UTILITY
10	FAUX WOOD SIDING(PRESSED FIBER PANEL); MANUFACTURER: Parklex PRODUCT:
11	STANDING SEAM METAL SIDING, BLACK/GRAY; MANUFACTURER: PRODUCT:
12	FLAT SEAM METAL ROOFING; MANUFACTURER: PRODUCT:
13	WALL COPING #3 STANDING SEAM METAL ROOFING; MANUFACTURER: PRODUCT:
14	SHINGLE ROOFING; MANUFACTURER: PRODUCT:
15	HALF ROUND GALVANIZED STL GUTTER & PIPE DOWNSPOUTS; MANUFACTURER: PRODUCT:
16	HALF ROUND BLACK STL GUTTER & PIPE DOWNSPOUTS; MANUFACTURER: PRODUCT:
17	WALL COPING #1 (METAL) BLACK; MANUFACTURER: PRODUCT:
18	FACIA TRIM #1 6" BLACK; MANUFACTURER: PRODUCT:
19	FACIA TRIM #2 12" BLACK; MANUFACTURER: PRODUCT:
20	FACIA TRIM #3 6" WHITE; MANUFACTURER: PRODUCT:
21	FACIA TRIM #4 12" WHITE; MANUFACTURER: PRODUCT:



### ARCHITECTURAL CODE REVIEW SET



Pittsford Canalside Properties, LLC  
**WESTPORT CROSSING**  
 75 MONROE AVE  
 PITTSFORD, NY 14534

REV. #	DESCRIPTION	DATE

THIS IS A SINGLE SHEET OF A COHESIVE SET OF CONSTRUCTION DOCUMENTS (INCLUDING DRAWINGS AND SPECIFICATIONS). INTERPRETATION OF THE INFORMATION AS PRESENTED SHOULD BE BASED ON THE ENTIRE SET OF DOCUMENTS.

DRAWING TITLE  
**BLDG 1 - EXTERIOR ELEVATIONS**

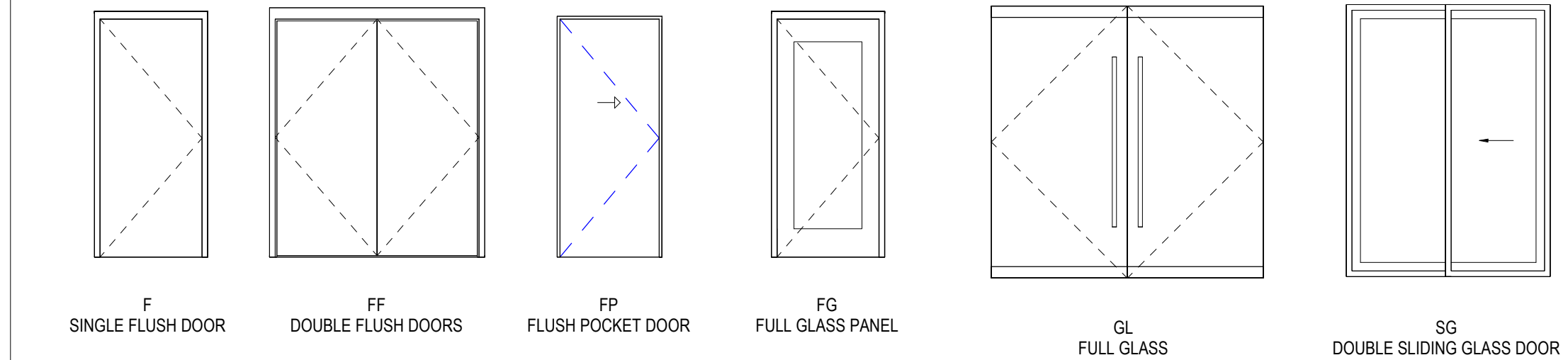
**A201.1**

ISSUED FOR ARCHITECTURAL AND CODE REVIEW

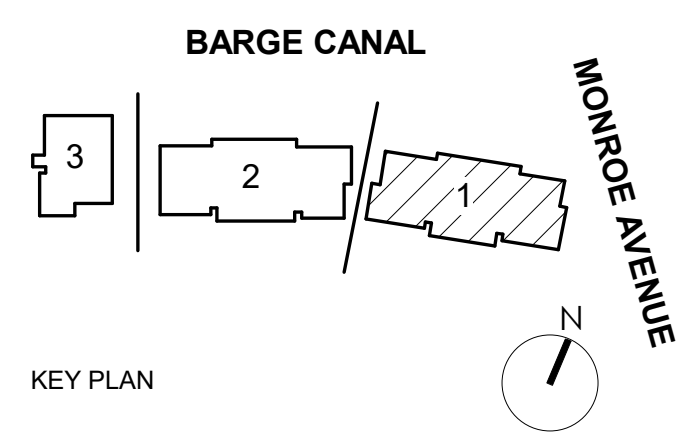
DOOR SCHEDULE - BUILDING 1 - LEVEL 1												
DOOR NO.	WIDTH	HEIGHT	DOOR TYPE	HARDWARE	DOOR				FRAME			COMMENTS
					MATERIAL	FINISH	GLASS TYPE	FIRE RATING	TYPE	MATERIAL	FINISH	
101.1	3' - 0"	7' - 0"	F						20			
101A.1	3' - 0"	7' - 0"	F	16.0	WD	CLR				WD	PT-X	
101B.1	2' - 6"	7' - 0"	F		WD	CLR				WD		
101C.1	3' - 0"	7' - 0"	F		WD	CLR				WD		
101D.1	3' - 0"	7' - 0"	F		WD	CLR				WD		
101E.1	5' - 10"	7' - 6 11/16"	B	17.0	WD	CLR		N/A		WD	PT-X	
101F.1	0' - 0"	0' - 0"			WD	CLR				WD		
101G.1	2' - 10"	7' - 0"	F		WD	CLR				WD		
101H.1	5' - 10"	7' - 6 11/16"	B		WD	CLR		N/A		WD		
101I.1	0' - 0"	0' - 0"			WD	CLR				WD		
101J.1	6' - 0"	8' - 0"										
102.1	3' - 0"	7' - 0"	F					20				
102A.1	3' - 0"	7' - 0"	F	16.0	WD	CLR				WD	PT-X	
102B.1	2' - 6"	7' - 0"	F		WD	CLR				WD		
102C.1	3' - 0"	7' - 0"	F		WD	CLR				WD		
102D.1	3' - 0"	7' - 0"	F		WD	CLR				WD		
102E.1	5' - 10"	7' - 6 11/16"	B	17.0	WD	CLR		N/A		WD	PT-X	
102F.1	0' - 0"	0' - 0"			WD	CLR				WD		
102G.1	3' - 0"	7' - 0"	F		WD	CLR				WD		
102H.1	5' - 10"	7' - 6 11/16"	B		WD	CLR		N/A		WD		
102I.1	0' - 0"	0' - 0"			WD	CLR				WD		
102J.1	5' - 10"	7' - 6 11/16"	B					N/A				
102K.1	2' - 9"	8' - 0"	FG									
103.1	3' - 0"	7' - 0"	F					20				
103A.1	2' - 6"	7' - 0"	F		WD	CLR				WD		
103B.1	2' - 6"	7' - 0"	F		WD	CLR				WD		
103C.1	3' - 0"	7' - 0"	F		WD	CLR				WD		
103D.1	5' - 10"	7' - 6 11/16"	B		WD	CLR		N/A		WD		
103E.1	0' - 0"	0' - 0"			WD	CLR				WD		
103F.1	2' - 9"	7' - 8"	FG									
103G.1	2' - 10"	7' - 0"	F		WD	CLR				WD		
103H.1	3' - 0"	7' - 0"	F		WD	CLR				WD		
103I.1	5' - 10"	7' - 6 11/16"	B		WD	CLR		N/A		WD		
103J.1	0' - 0"	0' - 0"			WD	CLR				WD		
104.1	3' - 0"	7' - 0"	F					20				
104A.1	2' - 6"	7' - 0"	F		WD	CLR				WD		
104B.1	3' - 0"	7' - 0"	F		WD	CLR				WD		
104C.1	3' - 0"	7' - 0"	F		WD	CLR				WD		
104D.1	3' - 0"	7' - 0"	F		WD	CLR				WD		
104E.1	5' - 10"	7' - 6 11/16"	B		WD	CLR		N/A		WD		
104F.1	0' - 0"	0' - 0"			WD	CLR				WD		
105.1	3' - 0"	7' - 0"	F					20				
105A.1	2' - 6"	7' - 0"	F		WD	CLR				WD		
105B.1	2' - 6"	7' - 0"	F		WD	CLR				WD		
105C.1	3' - 0"	7' - 0"	F		WD	CLR				WD		
105D.1	5' - 10"	7' - 6 11/16"	B		WD	CLR		N/A		WD		
105E.1	0' - 0"	0' - 0"			WD	CLR				WD		
105F.1	3' - 0"	8' - 0"	FG									
105G.1	2' - 10"	7' - 0"	F		WD	CLR				WD		
105H.1	3' - 0"	7' - 0"	F		WD	CLR				WD		
105I.1	5' - 10"	7' - 6 11/16"	B		WD	CLR		N/A		WD		
105J.1	0' - 0"	0' - 0"			WD	CLR				WD		
106.1	3' - 0"	7' - 0"	F					20				
106A.1	2' - 6"	7' - 0"	F		WD	CLR				WD		
106B.1	3' - 0"	7' - 0"	F		WD	CLR				WD		
106C.1	3' - 0"	7' - 0"	F		WD	CLR				WD		
106D.1	3' - 0"	7' - 0"	F		WD	CLR				WD		
106E.1	5' - 10"	7' - 6 11/16"	B		WD	CLR		N/A		WD		
106F.1	0' - 0"	0' - 0"			WD	CLR				WD		
107.1	3' - 0"	7' - 0"	F					20				
107A.1	3' - 0"	7' - 0"	F	16.0	WD	CLR				WD	PT-X	
107B.1	2' - 6"	7' - 0"	F		WD	CLR				WD		
107C.1	3' - 0"	7' - 0"	F		WD	CLR				WD		
107D.1	3' - 0"	7' - 0"	F		WD	CLR				WD		
107E.1	5' - 10"	7' - 6 11/16"	B	17.0	WD	CLR		N/A		WD	PT-X	
107F.1	0' - 0"	0' - 0"			WD	CLR				WD		
107G.1	2' - 10"	7' - 0"	F		WD	CLR				WD		
107H.1	5' - 10"	7' - 6 11/16"	B		WD	CLR		N/A		WD		
107I.1	0' - 0"	0' - 0"			WD	CLR				WD		
107J.1	6' - 0"	8' - 0"										
108.1	3' - 0"	7' - 0"	F					20				
108A.1	2' - 6"	7' - 0"	F		WD	CLR				WD		
108B.1	2' - 6"	7' - 0"	F		WD	CLR				WD		
108C.1	3' - 0"	7' - 0"	F		WD	CLR				WD		
108D.1	3' - 0"	7' - 0"	F		WD	CLR				WD		
108E.1	3' - 0"	7' - 0"	F		WD	CLR				WD		
108F.1	5' - 10"	7' - 6 11/16"	B		WD	CLR		N/A		WD		
108G.1	5' - 10"	7' - 6 11/16"	B		WD	CLR		N/A		WD		
108H.1	0' - 0"	0' - 0"			WD	CLR				WD		
108I.1	2' - 8"	7' - 0"	F		WD	CLR				WD		
108J.1	3' - 0"	7' - 0"	F		WD	CLR				WD		
108K.1	5' - 10"	7' - 6 11/16"	B		WD	CLR		N/A		WD		
108L.1	0' - 0"	0' - 0"			WD	CLR				WD		

DOOR SCHEDULE - BUILDING 1 - LEVEL 1												
DOOR NO.	WIDTH	HEIGHT	DOOR TYPE	HARDWARE	DOOR				FRAME			COMMENTS
					MATERIAL	FINISH	GLASS TYPE	FIRE RATING	TYPE	MATERIAL	FINISH	
108M.1	6' - 0"	8' - 0"										
EL100.1	4' - 0"	7' - 0"	F						60 MIN.			
H101.1	3' - 0"	7' - 0"	F						20 MIN.			
J101.1	4' - 0"	7' - 0"	F		WD				20 MIN.	HM		
J108.1	4' - 0"	7' - 0"	F		WD				20 MIN.	HM		
M101.1	4' - 0"	7' - 0"	F		WD				20 MIN.	HM		
M102.1	4' - 0"	7' - 0"	F		WD				20 MIN.	HM		
M103.1	4' - 0"	7' - 0"	F		WD				20 MIN.	HM		
M104.1	4' - 0"	7' - 0"	F		WD				20 MIN.	HM		
M105.1	4' - 0"	7' - 0"	F		WD				20 MIN.	HM		
M106.1	4' - 0"	7' - 0"	F		WD				20 MIN.	HM		
M107.1	4' - 0"	7' - 0"	F		WD				20 MIN.	HM		
M108.1	4' - 0"	7' - 0"	F		WD				20 MIN.	HM		
S100A.1	3' - 4"	7' - 0"	F									
S100B.1	3' - 4"	9' - 11 7/8"	FG									
S101A.1	3' - 4"	7' - 0"							45 MIN			
S101B.1	3' - 4"	7' - 0"							45 MIN			
S102A.1	3' - 4"	7' - 0"										
S102B.1	3' - 4"	7' - 0"										
T100.1	6' - 0"	7' - 0"										
T101.1	3' - 0"	7' - 0"	F						45 MIN			
Grand total: 104												

**DOOR TYPES**



**ARCHITECTURAL CODE REVIEW SET**



Pittsford Canalside Properties, LLC  
**WESTPORT CROSSING**  
 75 MONROE AVE  
 PITTSFORD, NY 14534

REV. #	DESCRIPTION	DATE

JOB NO. 2101  
 SCALE 1/4" = 1'-0"  
 ISSUE DATE 03/09/2023  
 DRAWN BY XXX  
 CHECKED BY XXX

THIS IS A SINGLE SHEET OF A COHESIVE SET OF CONSTRUCTION DOCUMENTS (INCLUDING DRAWINGS AND SPECIFICATIONS). INTERPRETATION OF THE INFORMATION AS PRESENTED SHOULD BE BASED ON THE ENTIRE SET OF DOCUMENTS.

DRAWING TITLE  
**BLDG 1 - DOOR SCHEDULE**

**A802.1**

ISSUED FOR ARCHITECTURAL AND CODE REVIEW

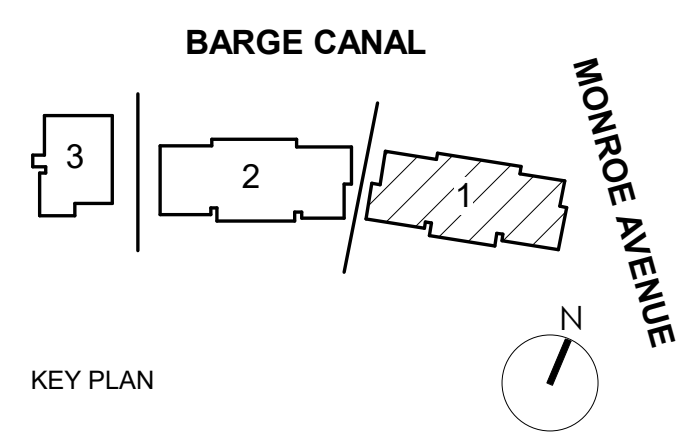
DOOR SCHEDULE - BUILDING 1 - LEVEL 2												
DOOR NO.	WIDTH	HEIGHT	DOOR TYPE	HARDWARE	DOOR				FRAME			COMMENTS
					MATERIAL	FINISH	GLASS TYPE	FIRE RATING	TYPE	MATERIAL	FINISH	
201.1	3'-0"	7'-0"	F						20 MIN			
201A.1	3'-0"	7'-0"	F	16.0	WD	CLR				WD	PT-X	
201B.1	2'-6"	7'-0"	F		WD	CLR				WD		
201C.1	3'-0"	7'-0"	F		WD	CLR				WD		
201D.1	3'-0"	7'-0"	F		WD	CLR				WD		
201E.1	5'-10"	7'-6 11/16"	B	17.0	WD	CLR		N/A		WD	PT-X	
201F.1	0'-0"	0'-0"			WD	CLR				WD		
201G.1	2'-10"	7'-0"	F		WD	CLR				WD		
201H.1	5'-10"	7'-6 11/16"	B		WD	CLR		N/A		WD		
201I.1	0'-0"	0'-0"			WD	CLR				WD		
201J.1	6'-0"	8'-0"										
202.1	3'-0"	7'-0"	F						20 MIN			
202A.1	3'-0"	7'-0"	F	16.0	WD	CLR				WD	PT-X	
202B.1	2'-6"	7'-0"	F		WD	CLR				WD		
202C.1	3'-0"	7'-0"	F		WD	CLR				WD		
202D.1	3'-0"	7'-0"	F		WD	CLR				WD		
202E.1	5'-10"	7'-6 11/16"	B	17.0	WD	CLR		N/A		WD	PT-X	
202F.1	2'-10"	7'-0"	F		WD	CLR				WD		
202G.1	3'-0"	7'-0"	F		WD	CLR				WD		
202H.1	5'-10"	7'-6 11/16"	B		WD	CLR		N/A		WD		
202I.1	2'-8"	7'-0"	FP		WD	CLR				WD		
202K.1	6'-0"	8'-0"										
203.1	3'-0"	7'-0"	F						20 MIN			
203A.1	2'-6"	7'-0"	F		WD	CLR				WD		
203B.1	2'-6"	7'-0"	F		WD	CLR				WD		
203C.1	3'-0"	7'-0"	F		WD	CLR				WD		
203D.1	5'-10"	7'-6 11/16"	B		WD	CLR		N/A		WD		
203E.1	0'-0"	0'-0"			WD	CLR				WD		
203F.1	6'-0"	8'-0"										
203G.1	2'-10"	7'-0"	F		WD	CLR				WD		
203H.1	3'-0"	7'-0"	F		WD	CLR				WD		
203I.1	5'-10"	7'-6 11/16"	B		WD	CLR		N/A		WD		
203J.1	0'-0"	0'-0"			WD	CLR				WD		
204.1	3'-0"	7'-0"	F						20 MIN			
204A.1	2'-6"	7'-0"	F		WD	CLR				WD		
204B.1	3'-0"	7'-0"	F		WD	CLR				WD		
204C.1	3'-0"	7'-0"	F		WD	CLR				WD		
204D.1	3'-0"	7'-0"	F		WD	CLR				WD		
204E.1	5'-10"	7'-6 11/16"	B		WD	CLR		N/A		WD		
204F.1	0'-0"	0'-0"			WD	CLR				WD		
204G.1	6'-0"	8'-0"										
204J.1	5'-10"	7'-6 11/16"	B					N/A				
205.1	3'-0"	7'-0"	F						20 MIN			
205A.1	2'-6"	7'-0"	F		WD	CLR				WD		
205B.1	2'-6"	7'-0"	F		WD	CLR				WD		
205C.1	3'-0"	7'-0"	F		WD	CLR				WD		
205D.1	5'-10"	7'-6 11/16"	B		WD	CLR		N/A		WD		
205E.1	0'-0"	0'-0"			WD	CLR				WD		
205F.1	6'-0"	8'-0"										
205G.1	2'-10"	7'-0"	F		WD	CLR				WD		
205H.1	3'-0"	7'-0"	F		WD	CLR				WD		
205I.1	5'-10"	7'-6 11/16"	B		WD	CLR		N/A		WD		
205J.1	0'-0"	0'-0"			WD	CLR				WD		
206.1	3'-0"	7'-0"	F						20 MIN			
206A.1	2'-6"	7'-0"	F		WD	CLR				WD		
206B.1	3'-0"	7'-0"	F		WD	CLR				WD		
206C.1	3'-0"	7'-0"	F		WD	CLR				WD		
206D.1	3'-0"	7'-0"	F		WD	CLR				WD		
206E.1	5'-10"	7'-6 11/16"	B		WD	CLR		N/A		WD		
206F.1	0'-0"	0'-0"			WD	CLR				WD		
206G.1	6'-0"	8'-0"										
207.1	3'-0"	7'-0"	F						20 MIN			
207A.1	3'-0"	7'-0"	F	16.0	WD	CLR				WD	PT-X	
207B.1	2'-6"	7'-0"	F		WD	CLR				WD		
207C.1	3'-0"	7'-0"	F		WD	CLR				WD		
207D.1	3'-0"	7'-0"	F		WD	CLR				WD		
207E.1	5'-10"	7'-6 11/16"	B	17.0	WD	CLR		N/A		WD	PT-X	
207F.1	0'-0"	0'-0"			WD	CLR				WD		
207G.1	2'-10"	7'-0"	F		WD	CLR				WD		
207H.1	5'-10"	7'-6 11/16"	B		WD	CLR		N/A		WD		
207I.1	0'-0"	0'-0"			WD	CLR				WD		
207J.1	6'-0"	8'-0"										
208.1	3'-0"	7'-0"	F						20 MIN			
208B.1	2'-6"	7'-0"	F		WD	CLR				WD		
208C.1	3'-0"	7'-0"	F		WD	CLR				WD		
208D.1	3'-0"	7'-0"	F		WD	CLR				WD		
208E.1	3'-0"	7'-0"	F		WD	CLR				WD		
208F.1	5'-10"	7'-6 11/16"	B		WD	CLR		N/A		WD		
208G.1	5'-10"	7'-6 11/16"	B		WD	CLR		N/A		WD		
208H.1	0'-0"	0'-0"			WD	CLR				WD		
208I.1	2'-8"	7'-0"	F		WD	CLR				WD		
208J.1	3'-0"	7'-0"	F		WD	CLR				WD		
208K.1	5'-10"	7'-6 11/16"	B		WD	CLR		N/A		WD		
208L.1	0'-0"	0'-0"			WD	CLR				WD		

DOOR SCHEDULE - BUILDING 1 - LEVEL 2												
DOOR NO.	WIDTH	HEIGHT	DOOR TYPE	HARDWARE	DOOR				FRAME			COMMENTS
					MATERIAL	FINISH	GLASS TYPE	FIRE RATING	TYPE	MATERIAL	FINISH	
208M.1	6'-0"	8'-0"										
J201.1	4'-0"	7'-0"	F		WD						HM	
M201.1	4'-0"	7'-0"	F						20 MIN.			
M202.1	4'-0"	7'-0"	F						20 MIN.			
M203.1	4'-0"	7'-0"	F						20 MIN.			
M204.1	4'-0"	7'-0"	F						20 MIN.			
M205.1	4'-0"	7'-0"	F						20 MIN.			
M206.1	4'-0"	7'-0"	F						20 MIN.			
M207.1	4'-0"	7'-0"	F						20 MIN.			
M208.1	4'-0"	7'-0"	F						20 MIN.			
S201.1	3'-0"	7'-0"	F						45 MIN			
S202.1	3'-0"	7'-0"	F						90 MIN.			
T201.1	3'-0"	7'-0"	F						45 MIN			

Grand total: 97



ARCHITECTURAL CODE REVIEW SET



Pittsford Canalside Properties, LLC

WESTPORT CROSSING

75 MONROE AVE  
PITTSFORD, NY 14534

REV. #	DESCRIPTION	DATE

JOB NO.	2101
SCALE	
ISSUE DATE	03/09/2023
DRAWN BY	XXX
CHECKED BY	XXX

THIS IS A SINGLE SHEET OF A COHESIVE SET OF CONSTRUCTION DOCUMENTS (INCLUDING DRAWINGS AND SPECIFICATIONS). INTERPRETATION OF THE INFORMATION AS PRESENTED SHOULD BE BASED ON THE ENTIRE SET OF DOCUMENTS.

DRAWING TITLE

BLDG 1 - DOOR SCHEDULE

A803.1

ISSUED FOR ARCHITECTURAL AND CODE REVIEW

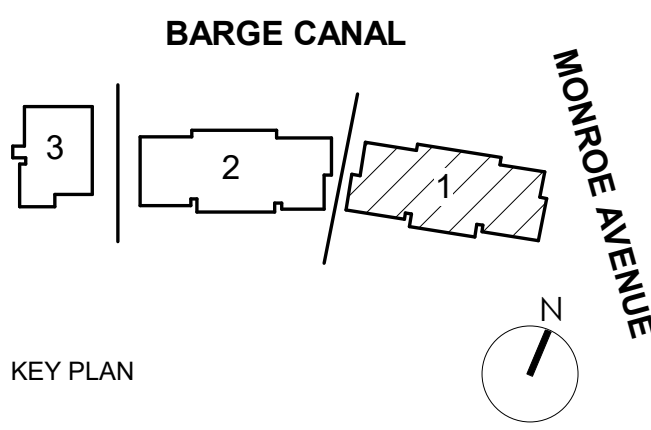
DOOR SCHEDULE - BUILDING 1- LEVEL 3												
DOOR NO.	WIDTH	HEIGHT	DOOR TYPE	HARDWARE	DOOR				FRAME			COMMENTS
					MATERIAL	FINISH	GLASS TYPE	FIRE RATING	TYPE	MATERIAL	FINISH	
301.1	3' - 0"	7' - 0"	F						20 MIN			
301B.1	3' - 0"	7' - 0"	F		WD	CLR					WD	
301C.1	2' - 6"	7' - 0"	F		WD	CLR					WD	
301D.1	5' - 10"	7' - 6 11/16"	B		WD	CLR		N/A			WD	
301E.1	0' - 0"	0' - 0"			WD	CLR					WD	
301F.1	3' - 0"	7' - 0"	F		WD	CLR					WD	
301G.1	2' - 10"	7' - 0"	F		WD	CLR					WD	
301H.1	5' - 10"	7' - 6 11/16"	B		WD	CLR		N/A			WD	
301I.1	0' - 0"	0' - 0"			WD	CLR					WD	
301J.1	3' - 0"	8' - 0"	FG									
302.1	3' - 0"	7' - 0"	F					20				
302A.1	2' - 8"	7' - 0"	F									
302B.1	2' - 8"	7' - 0"	F									
302C.1	3' - 0"	7' - 0"	F									
302D.1	2' - 10"	7' - 0"	F									
302E.1	3' - 0"	7' - 0"	F									
302F.1	3' - 0"	7' - 0"	F									
302G.1	0' - 0"	0' - 0"										
302H.1	2' - 10"	7' - 0"	F									
302I.1	0' - 0"	0' - 0"										
302J.1	2' - 11 11/32"	8' - 0"	FG									
303.1	3' - 0"	7' - 0"	F					20 MIN				
303A.1	2' - 6"	7' - 0"	F		WD	CLR					WD	
303B.1	3' - 0"	7' - 0"	F		WD	CLR					WD	
303C.1	3' - 0"	7' - 0"	F		WD	CLR					WD	
303D.1	3' - 0"	7' - 0"	F		WD	CLR					WD	
303E.1	5' - 10"	7' - 6 11/16"	B		WD	CLR		N/A			WD	
303F.1	0' - 0"	0' - 0"			WD	CLR					WD	
304.1	3' - 0"	7' - 0"	F					20 MIN				
304A.1	2' - 6"	7' - 0"	F		WD	CLR					WD	
304B.1	3' - 0"	7' - 0"	F		WD	CLR					WD	
304C.1	3' - 0"	7' - 0"	F		WD	CLR					WD	
304D.1	3' - 0"	7' - 0"	F		WD	CLR					WD	
304E.1	5' - 10"	7' - 6 11/16"	B		WD	CLR		N/A			WD	
304F.1	0' - 0"	0' - 0"			WD	CLR					WD	
305.1	3' - 0"	7' - 0"	F					20 MIN				
305A.1	3' - 0"	7' - 0"	F									
305B.1	3' - 0"	7' - 0"	F									
305C.1	3' - 0"	7' - 0"	F									
305D.1	2' - 10"	7' - 0"	F									
305E.1	5' - 10"	7' - 6 11/16"	B					N/A				
305F.1	2' - 10"	7' - 0"	FP									
305G.1	2' - 8"	7' - 8"	FG									
306.1	3' - 0"	7' - 0"	F					20 MIN				
306A.1	2' - 6"	7' - 0"	F		WD	CLR					WD	
306B.1	3' - 0"	7' - 0"	F		WD	CLR					WD	
306C.1	2' - 6"	7' - 0"	F		WD	CLR					WD	
306D.1	5' - 10"	7' - 6 11/16"	B		WD	CLR		N/A			WD	
306E.1	0' - 0"	0' - 0"			WD	CLR					WD	
306F.1	3' - 0"	8' - 0"	FG									
306G.1	2' - 10"	7' - 0"	F		WD	CLR					WD	
306H.1	3' - 0"	7' - 0"	F		WD	CLR					WD	
306I.1	5' - 10"	7' - 6 11/16"	B		WD	CLR		N/A			WD	
307.1	3' - 0"	7' - 0"	F		WD	CLR		20 MIN			WD	
307.1	3' - 0"	7' - 0"	F					20				
307A.1	3' - 0"	7' - 0"	F									
307B.1	2' - 6"	7' - 0"	F									
307C.1	3' - 0"	7' - 0"	F									
307D.1	3' - 0"	7' - 0"	F									
307E.1	0' - 0"	0' - 0"										
307F.1	3' - 0"	7' - 0"	F									
307G.1	5' - 10"	7' - 6 11/16"	B					N/A				
307H.1	2' - 6"	7' - 0"	F									
307I.1	0' - 0"	0' - 0"										
307J.1	5' - 10"	7' - 6 11/16"	B					N/A				
307K.1	6' - 0"	8' - 0"										
J301.1	4' - 0"	7' - 0"	F		WD			20 MIN.			HM	
M301.1	4' - 0"	7' - 0"	F					20 MIN.				
M302.1	4' - 0"	7' - 0"	F					20 MIN.				
M303.1	4' - 0"	7' - 0"	F					20 MIN.				
M304.1	4' - 0"	7' - 0"	F					20 MIN.				
M305.1	4' - 0"	7' - 0"	F					20 MIN.				
M306.1	4' - 0"	7' - 0"	F					20 MIN.				
M307.1	4' - 0"	7' - 0"	F					20 MIN.				
S301.1	3' - 0"	7' - 0"	F					45 MIN				
S302.1	3' - 0"	7' - 0"	F					90 MIN.				
T301.1	3' - 0"	7' - 0"	F					45 MIN				
Grand total: 77												



BUFFALO | ROCHESTER  
www.cjsarchitects.com



ARCHITECTURAL CODE  
REVIEW SET



Pittsford Canalside Properties, LLC

WESTPORT  
CROSSING

75 MONROE AVE  
PITTSFORD, NY 14534

REV. #	DESCRIPTION	DATE

JOB NO. 2101

SCALE

ISSUE DATE 03/09/2023

DRAWN BY XXX

CHECKED BY XXX

THIS IS A SINGLE SHEET OF A COHESIVE SET OF CONSTRUCTION DOCUMENTS (INCLUDING DRAWINGS AND SPECIFICATIONS). INTERPRETATION OF THE INFORMATION AS PRESENTED SHOULD BE BASED ON THE ENTIRE SET OF DOCUMENTS.

DRAWING TITLE

BLDG 1 - DOOR  
SCHEDULE

A804.1

ISSUED FOR ARCHITECTURAL AND CODE REVIEW

WINDOW SCHEDULE - BUILDING 1 - LEVEL 1						
From Room: Number	From Room: Name	Type Mark	Width	Height	Comments	
101.1	UNIT 2A.1	W2	3'-0"	6'-0"		
101.1	UNIT 2A.1	W2	3'-0"	6'-0"		
101.1	UNIT 2A.1	W2	3'-0"	6'-0"		
101.1	UNIT 2A.1	W2	3'-0"	6'-0"		
101.1:4						
102.1	UNIT 2B.1	W12	3'-0"	5'-0"		
102.1	UNIT 2B.1	W12	3'-0"	5'-0"		
102.1	UNIT 2B.1	W12	3'-0"	5'-0"		
102.1:3						
104.1	UNIT 1A.1	W22	3'-0"	5'-0"		
104.1	UNIT 1A.1	W22	3'-0"	5'-0"		
104.1	UNIT 1A.1	W22	3'-0"	5'-0"		
104.1	UNIT 1A.1	W22	3'-0"	5'-0"		
104.1:4						
105.1	UNIT 2C.1	W4	3'-0"	6'-0"		
105.1	UNIT 2C.1	W4	3'-0"	6'-0"		
105.1:2						
106.1	UNIT 1A.1	W22	3'-0"	5'-0"		
106.1	UNIT 1A.1	W22	3'-0"	5'-0"		
106.1	UNIT 1A.1	W22	3'-0"	5'-0"		
106.1	UNIT 1A.1	W22	3'-0"	5'-0"		
106.1:4						
108.1	UNIT 3A.1	W13	3'-0"	5'-0"		
108.1	UNIT 3A.1	W13	3'-0"	5'-0"		
108.1	UNIT 3A.1	W13	3'-0"	5'-0"		
108.1	UNIT 3A.1	W13	3'-0"	5'-0"		
108.1	UNIT 3A.1	W13	3'-0"	5'-0"		
108.1	UNIT 3A.1	W13	3'-0"	5'-0"		
108.1	UNIT 3A.1	W13	3'-0"	5'-0"		
108.1	UNIT 3A.1	W13	3'-0"	5'-0"		
108.1	UNIT 3A.1	W13	3'-0"	5'-0"		
108.1	UNIT 3A.1	W13	3'-0"	5'-0"		
108.1	UNIT 3A.1	W13	3'-0"	5'-0"		
108.1:9						
Grand total: 26						

WINDOW SCHEDULE - BUILDING 1 - LEVEL 2						
From Room: Number	From Room: Name	Type Mark	Width	Height	Comments	
102.1	UNIT 2B.1	W12	3'-0"	5'-0"		
102.1	UNIT 2B.1	W12	3'-0"	5'-0"		
102.1	UNIT 2B.1	W12	3'-0"	5'-0"		
201.1	UNIT 2A.1	W2	3'-0"	6'-0"		
201.1	UNIT 2A.1	W2	3'-0"	6'-0"		
201.1	UNIT 2A.1	W2	3'-0"	6'-0"		
201.1	UNIT 2A.1	W2	3'-0"	6'-0"		
203.1	UNIT 2C.1	W8	3'-0"	6'-0"		
203.1	UNIT 2C.1	W8	3'-0"	6'-0"		
203.1	UNIT 2C.1	W8	3'-0"	6'-0"		
203.1	UNIT 2C.1	W8	3'-0"	6'-0"		
206.1	UNIT 1A.1	W22	3'-0"	5'-0"		
206.1	UNIT 1A.1	W22	3'-0"	5'-0"		
208.1	UNIT 3A.1	W13	3'-0"	5'-0"		
208.1	UNIT 3A.1	W13	3'-0"	5'-0"		
208.1	UNIT 3A.1	W13	3'-0"	5'-0"		
208.1	UNIT 3A.1	W13	3'-0"	5'-0"		
208.1	UNIT 3A.1	W13	3'-0"	5'-0"		
208.1	UNIT 3A.1	W13	3'-0"	5'-0"		
208.1	UNIT 3A.1	W13	3'-0"	5'-0"		
208.1	UNIT 3A.1	W13	3'-0"	5'-0"		
208.1	UNIT 3A.1	W13	3'-0"	5'-0"		
208.1	UNIT 3A.1	W13	3'-0"	5'-0"		
208.1	UNIT 3A.1	W13	3'-0"	5'-0"		
C201.1	CORRIDOR	W29	2'-0"	2'-0"		
Grand total: 22						

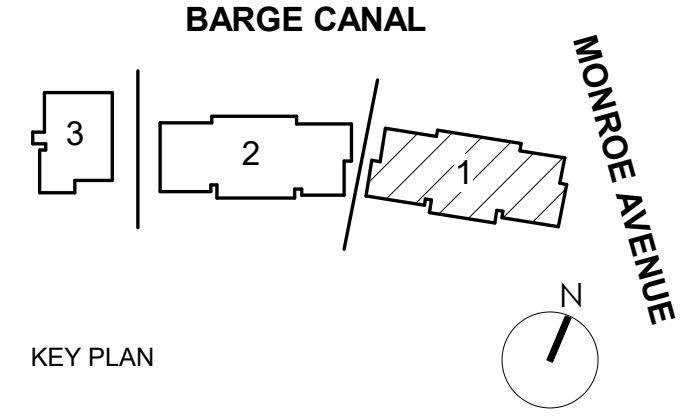
WINDOW SCHEDULE - BUILDING 1 - LEVEL 3						
From Room: Number	From Room: Name	Type Mark	Width	Height	Comments	
301.1	UNIT 2D.1	W27	3'-0"	6'-0"		
301.1	UNIT 2D.1	W8	3'-0"	6'-0"		
301.1	UNIT 2D.1	W8	3'-0"	6'-0"		
301.1:3						
302.1	UNIT 2E.1	W12	3'-0"	5'-0"		
302.1	UNIT 2E.1	W12	3'-0"	5'-0"		
302.1	UNIT 2E.1	W12	3'-0"	5'-0"		
302.1	UNIT 2E.1	W12	3'-0"	5'-0"		
302.1:4						
303.1	UNIT 1A.1	W2	3'-0"	6'-0"		
303.1	UNIT 1A.1	W2	3'-0"	6'-0"		
303.1	UNIT 1A.1	W2	3'-0"	6'-0"		
303.1	UNIT 1A.1	W2	3'-0"	6'-0"		
303.1:4						
305.1	UNIT 1B.1	W8	3'-0"	6'-0"		
305.1:1						
306.1	UNIT 2D.1	W14	3'-0"	5'-0"		
306.1	UNIT 2D.1	W14	3'-0"	5'-0"		
306.1:2						
307.1	UNIT 3B.1	W16	3'-0"	6'-0"		
307.1	UNIT 3B.1	W16	3'-0"	6'-0"		
307.1	UNIT 3B.1	W16	3'-0"	6'-0"		
307.1	UNIT 3B.1	W16	3'-0"	6'-0"		
307.1	UNIT 3B.1	W16	3'-0"	6'-0"		
307.1	UNIT 3B.1	W16	3'-0"	6'-0"		
307.1	UNIT 3B.1	W16	3'-0"	6'-0"		
307.1	UNIT 3B.1	W16	3'-0"	6'-0"		
307.1	UNIT 3B.1	W16	3'-0"	6'-0"		
307.1	UNIT 3B.1	W16	3'-0"	6'-0"		
307.1	UNIT 3B.1	W16	3'-0"	6'-0"		
307.1	UNIT 3B.1	W16	3'-0"	6'-0"		
307.1	UNIT 3B.1	W16	3'-0"	6'-0"		
307.1	UNIT 3B.1	W16	3'-0"	6'-0"		
307.1	UNIT 3B.1	W16	3'-0"	6'-0"		
307.1	UNIT 3B.1	W16	3'-0"	6'-0"		
307.1	UNIT 3B.1	W16	3'-0"	6'-0"		
307.1:11						
C301.1	CORRIDOR	W29	2'-0"	2'-0"		
C301.1:1						
Grand total: 26						

**GENERAL WINDOW NOTES**

1. ALL PROPOSED WINDOW DETAILS ON SHEETS A-810 THRU A812 ARE DRAWN BY WINDOW MFR WEATHER SHIELD.
2. ALL PROPOSED WINDOWS TO BE FROM MFR'S 'PREMIUM SERIES' - ALUM CLAD WOOD WINDOWS WITH FACTORY AAMA 2605 FINISH ON THE EXTERIOR. INTERIOR TO BE FINE FACTORY PRIMED & PAINTED. COLOR TBD BY INTERIOR DESIGNER.
3. DRAWINGS ARE FOR COMPARING WINDOW PROFILES ONLY AND DOES NOT DETAIL METHOD FOR ATTACHMENT INTO ADJACENT CONSTRUCTION.
4. COORDINATE WITH WINDOW MFR FOR ALL BUILDING CONSTRUCTION DETAILS.
5. ALL ORIGINAL WOOD WINDOWS TO BE RESTORED WILL INCLUDE BUT WILL NOT BE LIMITED TO SCRAPING & PAINTING, STAINING, RESTORING OPERABILITY, REPLACING ANY MISSING/BROKEN PARTS WITH SIMILAR QUALITY, MATCHING PROFILE, MATERIAL & COLOR.



**ARCHITECTURAL CODE REVIEW SET**



Pittsford Canalside Properties, LLC  
**WESTPORT CROSSING**  
 75 MONROE AVE  
 PITTSFORD, NY 14534

REV. #	DESCRIPTION	DATE

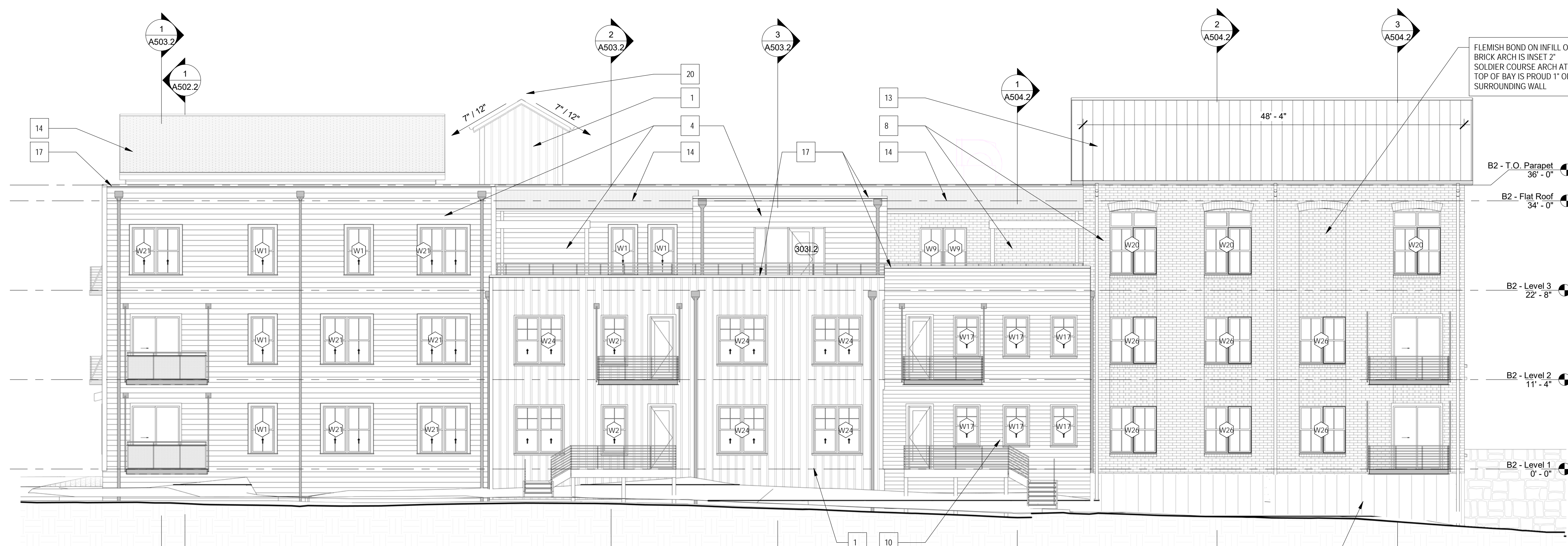
JOB NO.	2101
SCALE	1/4" = 1'-0"
ISSUE DATE	03/09/2023
DRAWN BY	XXX
CHECKED BY	XXX

THIS IS A SINGLE SHEET OF A COHESIVE SET OF CONSTRUCTION DOCUMENTS (INCLUDING DRAWINGS AND SPECIFICATIONS). INTERPRETATION OF THE INFORMATION AS PRESENTED SHOULD BE BASED ON THE ENTIRE SET OF DOCUMENTS.

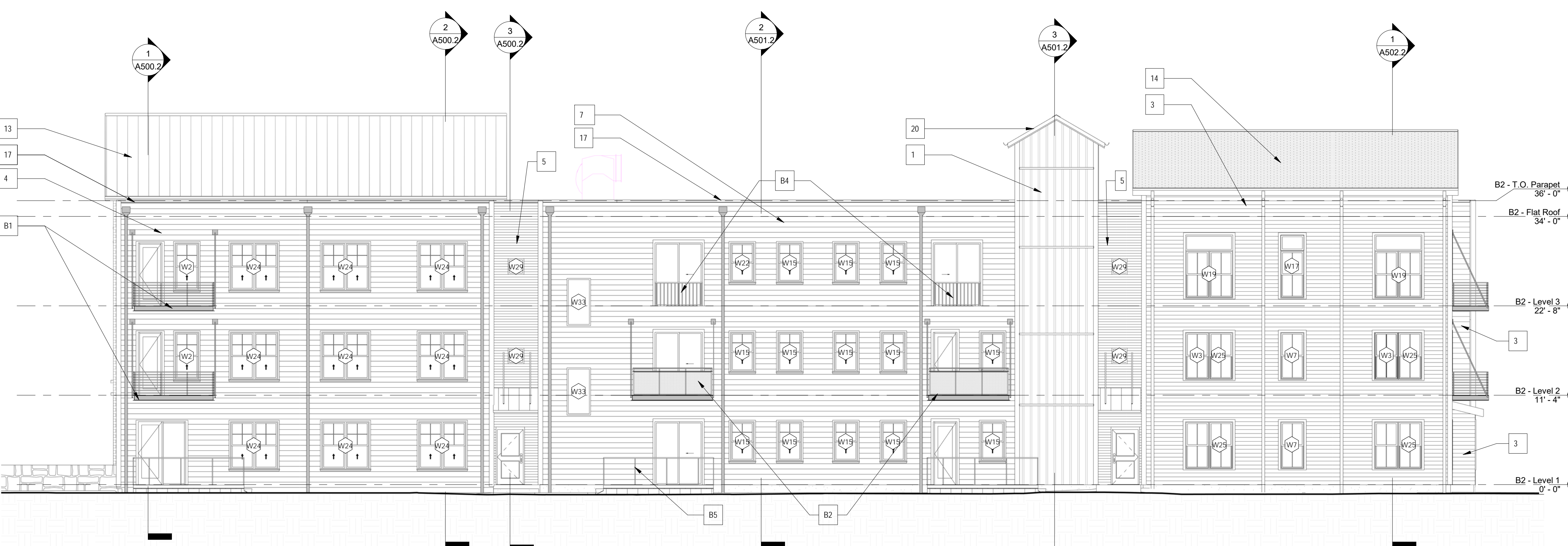
DRAWING TITLE  
**BLDG 1 - WINDOW SCHEDULE BY ROOM/UNIT**

**A807.1**





1 BLDG 2 - NORTH ELEVATION  
A200.2 1/8" = 1'-0"



2 BLDG 2 - SOUTH ELEVATION  
A200.2 1/8" = 1'-0"

**EXTERIOR MATERIALS LEGEND**

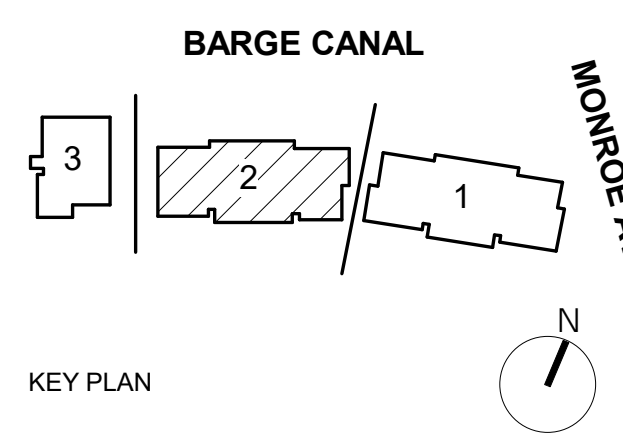
ALL MATERIALS NOT NECESSARILY USED

- GENERAL NOTES:  
 1) Window Exterior Trim to match wall color, Exceptions are Light grey Siding and Parklex Siding  
 2) Gabled roofs have black metal half round gutters and round down spouts  
 3) Flat roofs will have galvanized metal scuppers and round down spouts  
 4) Coping caps will be black metal on all walls with flat roofs. Exceptions are noted  
 5) Horizontal and vertical wall trim to match the wall cladding color. Exceptions are noted  
 6) Wall corner trim is an 8" wide board per face and to match wall material for horizontal siding and vertical Board and Baton Siding, color to match wall color  
 7) Wall vents for ERV(6" Dia) and Dryer (4" Dia) are not visible but will be present for every residential unit  
 8) Balcony details are on Sheet AT003 : B1 - 10' WIDE , B2 - 10' WIDE , B3 - 7' WIDE

MATERIAL IDENTIFICATION #:	MATERIAL BASIS OF DESIGN PRODUCT:
1	BOARD & BATTEN VERTICAL SIDING, 8" MODULE, WHITE. MANUFACTURER: JAMES HARDIE PRODUCT: HARDIE® PANEL VERTICAL SIDING SMOOTH
2	BOARD & BATTEN VERTICAL SIDING, 8" MODULE, RED. MANUFACTURER: JAMES HARDIE PRODUCT: HARDIE® PANEL VERTICAL SIDING SMOOTH
3	HORIZONTAL SIDING(FIBER CEMENT), 8" EXPOSURE, ARCTIC WHITE. MANUFACTURER: JAMES HARDIE PRODUCT: HARDIE® PLANK LAP SIDING SMOOTH
4	HORIZONTAL SIDING(FIBER CEMENT), 8" EXPOSURE, LIGHT GRAY. MANUFACTURER: JAMES HARDIE PRODUCT: HARDIE® PLANK LAP SIDING SMOOTH
5	HORIZONTAL SIDING(FIBER CEMENT), 4" EXPOSURE, BLACK ASH. MANUFACTURER: JAMES HARDIE PRODUCT: HARDIE® PLANK LAP SIDING SMOOTH
6	HORIZONTAL SIDING(FIBER CEMENT), 8" EXPOSURE, SAVANNAH GREEN. MANUFACTURER: JAMES HARDIE PRODUCT: HARDIE® PLANK LAP SIDING SMOOTH
7	HORIZONTAL SIDING(FIBER CEMENT), 8" EXPOSURE, BLUE. MANUFACTURER: JAMES HARDIE PRODUCT: HARDIE® PLANK LAP SIDING SMOOTH
8	RED BRICK VENEER. MANUFACTURER: GLEN-GERY PRODUCT: SIZE: UTILITY
9	BLACK BRICK VENEER. MANUFACTURER: GLEN-GERY PRODUCT: SIOUX CITY VINTAGE BLACK VELOUR SIZE: UTILITY
10	FAUX WOOD SIDING(PRESSED FIBER PANEL). MANUFACTURER: Parklex PRODUCT:
11	STANDING SEAM METAL SIDING, BLACK/GRAY. MANUFACTURER: PRODUCT:
12	FLAT SEAM METAL ROOFING. MANUFACTURER: PRODUCT:
13	WALL COPING #3 STANDING SEAM METAL ROOFING. MANUFACTURER: PRODUCT:
14	SHINGLE ROOFING MANUFACTURER: PRODUCT:
15	HALF ROUND GALVANIZED STL GUTTER & PIPE DOWNSPOUTS MANUFACTURER: PRODUCT:
16	HALF ROUND BLACK STL GUTTER & PIPE DOWNSPOUTS MANUFACTURER: PRODUCT:
17	WALL COPING #1 (METAL) BLACK MANUFACTURER: PRODUCT:
18	FACIA TRIM #1 6" BLACK MANUFACTURER: PRODUCT:
19	FACIA TRIM #2 12" BLACK MANUFACTURER: PRODUCT:
20	FACIA TRIM #3 6" WHITE MANUFACTURER: PRODUCT:
21	FACIA TRIM #4 12" WHITE MANUFACTURER: PRODUCT:



**ARCHITECTURAL CODE REVIEW SET**



Pittsford Canalside Properties, LLC  
**WESTPORT CROSSING**  
 75 MONROE AVE  
 PITTSFORD, NY 14534

REV. #	DESCRIPTION	DATE

THIS IS A SINGLE SHEET OF A COHESIVE SET OF CONSTRUCTION DOCUMENTS (INCLUDING DRAWINGS AND SPECIFICATIONS). INTERPRETATION OF THE INFORMATION AS PRESENTED SHOULD BE BASED ON THE ENTIRE SET OF DOCUMENTS.

DRAWING TITLE  
**BLDG 2 - EXTERIOR ELEVATIONS**

**A200.2**

ISSUED FOR ARCHITECTURAL AND CODE REVIEW



1 BLDG 2 - EAST ELEVATION  
A201.2 1/8" = 1'-0"



2 BLDG 2 - WEST ELEVATION  
A201.2 1/8" = 1'-0"

**EXTERIOR MATERIALS LEGEND**

ALL MATERIALS NOT NECESSARILY USED

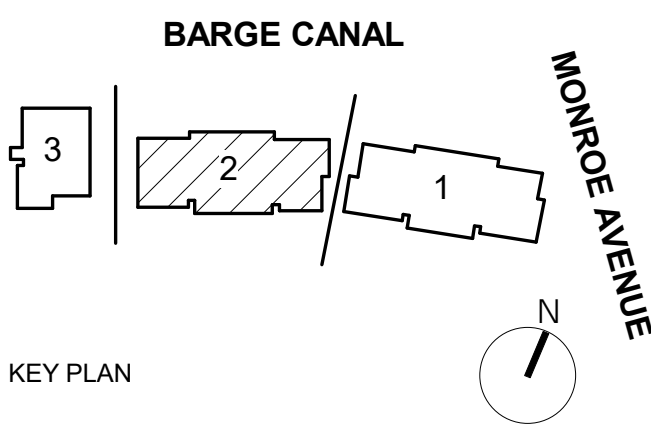
GENERAL NOTES:

- 1) Window Exterior Trim to match wall color, Exceptions are Light grey Siding and Parklex siding
- 2) Gabled roofs have black metal half round gutters and round down spouts
- 3) Flat roofs will have galvanized metal scuppers and round down spouts
- 4) Coping caps will be black metal on all walls with flat roofs. Exceptions are noted
- 5) Horizontal and vertical wall trim to match the wall cladding color. Exceptions are noted
- 6) Wall corner trim is an 8" wide board per face and to match wall material for horizontal siding and vertical Board and Baton Siding, color to match wall color
- 7) Wall vents for ERV(6" Dia) and Dryer (4" Dia) are not visible but will be present for every residential unit
- 8) Balcony details are on Sheet AT003 : B1 -10' WIDE , B2 -10' WIDE , B3 -7' WIDE

MATERIAL IDENTIFICATION #:	MATERIAL BASIS OF DESIGN PRODUCT:
1	BOARD & BATTEN VERTICAL SIDING, 8" MODULE, WHITE; MANUFACTURER: JAMES HARDIE PRODUCT: HARDIE® PANEL VERTICAL SIDING SMOOTH
2	BOARD & BATTEN VERTICAL SIDING, 8" MODULE, RED; MANUFACTURER: JAMES HARDIE PRODUCT: HARDIE® PANEL VERTICAL SIDING SMOOTH
3	HORIZONTAL SIDING(FIBER CEMENT), 8" EXPOSURE, ARCTIC WHITE; MANUFACTURER: JAMES HARDIE PRODUCT: HARDIE® PLANK LAP SIDING SMOOTH
4	HORIZONTAL SIDING(FIBER CEMENT), 8" EXPOSURE, LIGHT GRAY; MANUFACTURER: JAMES HARDIE PRODUCT: HARDIE® PLANK LAP SIDING SMOOTH
5	HORIZONTAL SIDING(FIBER CEMENT), 4" EXPOSURE, BLACK ASH; MANUFACTURER: JAMES HARDIE PRODUCT: HARDIE® PLANK LAP SIDING SMOOTH
6	HORIZONTAL SIDING(FIBER CEMENT), 8" EXPOSURE, SAVANNAH GREEN; MANUFACTURER: JAMES HARDIE PRODUCT: HARDIE® PLANK LAP SIDING SMOOTH
7	HORIZONTAL SIDING(FIBER CEMENT), 8" EXPOSURE, BLUE; MANUFACTURER: JAMES HARDIE PRODUCT: HARDIE® PLANK LAP SIDING SMOOTH
8	RED BRICK VENEER; MANUFACTURER: GLEN-GERY PRODUCT: UTILITY
9	BLACK BRICK VENEER; MANUFACTURER: GLEN-GERY PRODUCT: SIOUX CITY VINTAGE BLACK VELOUR SIZE: UTILITY
10	FAUX WOOD SIDING(PRESSED FIBER PANEL); MANUFACTURER: Parklex PRODUCT:
11	STANDING SEAM METAL SIDING, BLACK/GRAY; MANUFACTURER: PRODUCT:
12	FLAT SEAM METAL ROOFING; MANUFACTURER: PRODUCT:
13	WALL COPING #3 STANDING SEAM METAL ROOFING; MANUFACTURER: PRODUCT:
14	SHINGLE ROOFING; MANUFACTURER: PRODUCT:
15	HALF ROUND GALVANIZED STL GUTTER & PIPE DOWNSPOUTS; MANUFACTURER: PRODUCT:
16	HALF ROUND BLACK STL GUTTER & PIPE DOWNSPOUTS; MANUFACTURER: PRODUCT:
17	WALL COPING #1 (METAL) BLACK; MANUFACTURER: PRODUCT:
18	FACIA TRIM #1 6" BLACK; MANUFACTURER: PRODUCT:
19	FACIA TRIM #2 12" BLACK; MANUFACTURER: PRODUCT:
20	FACIA TRIM #3 6" WHITE; MANUFACTURER: PRODUCT:
21	FACIA TRIM #4 12" WHITE; MANUFACTURER: PRODUCT:



**ARCHITECTURAL CODE REVIEW SET**



Pittsford Canalside Properties, LLC

**WESTPORT CROSSING**

75 MONROE AVE  
PITTSFORD, NY 14534

REV. #	DESCRIPTION	DATE

JOB NO. 2101  
SCALE As indicated  
ISSUE DATE 03/09/2023  
DRAWN BY JB  
CHECKED BY DS

THIS IS A SINGLE SHEET OF A COHESIVE SET OF CONSTRUCTION DOCUMENTS (INCLUDING DRAWINGS AND SPECIFICATIONS). INTERPRETATION OF THE INFORMATION AS PRESENTED SHOULD BE BASED ON THE ENTIRE SET OF DOCUMENTS.

DRAWING TITLE  
**BLDG 2 - EXTERIOR ELEVATIONS**

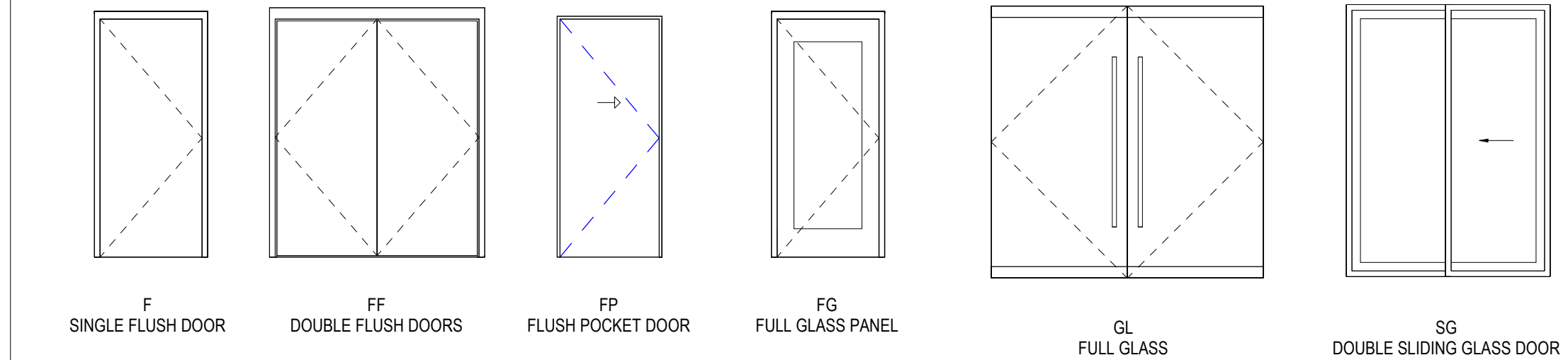
**A201.2**

ISSUED FOR ARCHITECTURAL AND CODE REVIEW

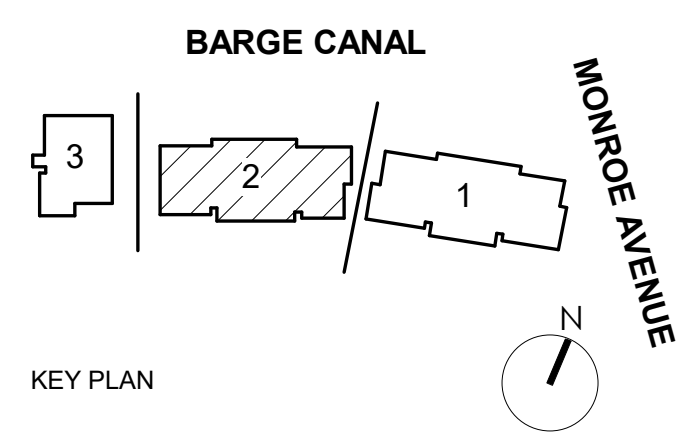
DOOR SCHEDULE - BUILDING 2 - Level 1												
DOOR NO.	WIDTH	HEIGHT	DOOR TYPE	HARDWARE	DOOR				FRAME			COMMENTS
					MATERIAL	FINISH	GLASS TYPE	FIRE RATING	TYPE	MATERIAL	FINISH	
101.2	3' - 0"	7' - 0"	F					20				
101A.2	2' - 8"	7' - 0"	F		WD	CLR				WD		
101B.2	2' - 8"	7' - 0"	F		WD	CLR				WD		
101C.2	3' - 0"	7' - 0"	F		WD	CLR				WD		
101D.2	5' - 10"	7' - 6 11/16"	B		WD	CLR		N/A		WD		
101E.2	0' - 0"	0' - 0"			WD	CLR				WD		
101F.2	3' - 0"	7' - 0"	F		WD	CLR				WD		
101G.2	3' - 0"	7' - 0"	F		WD	CLR				WD		
101H.2	5' - 10"	7' - 6 11/16"	B		WD	CLR		N/A		WD		
101I.2	0' - 0"	0' - 0"			WD	CLR				WD		
101J.2	3' - 0"	7' - 0"	F		WD	CLR				WD		
101K.2	2' - 8"	7' - 0"	F		WD	CLR				WD		
101L.2	6' - 0"	8' - 0"										
102.2	3' - 0"	7' - 0"	F					20				
102A.2	2' - 8"	7' - 0"	F		WD	CLR				WD		
102B.2	2' - 8"	7' - 0"	F		WD	CLR				WD		
102C.2	3' - 0"	7' - 0"	F		WD	CLR				WD		
102D.2	5' - 10"	7' - 6 11/16"	B		WD	CLR		N/A		WD		
102E.2	0' - 0"	0' - 0"			WD	CLR				WD		
102F.2	3' - 0"	7' - 0"	F		WD	CLR				WD		
102G.2	3' - 0"	7' - 0"	F		WD	CLR				WD		
102H.2	5' - 10"	7' - 6 11/16"	B		WD	CLR		N/A		WD		
102J.2	3' - 0"	7' - 0"	F		WD	CLR				WD		
102K.2	2' - 8"	7' - 0"	F		WD	CLR				WD		
102L.2	3' - 0"	8' - 0"	FG									
103.2	3' - 0"	7' - 0"	F					20				
103A.2	2' - 6"	7' - 0"	F		WD	CLR				WD		
103B.2	2' - 0"	7' - 0"	F		WD	CLR				WD		
103C.2	3' - 0"	7' - 0"	F		WD	CLR				WD		
103D.2	5' - 10"	7' - 6 11/16"	B		WD	CLR		N/A		WD		
103E.2	0' - 0"	0' - 0"			WD	CLR				WD		
103F.2	2' - 8"	7' - 8"	FG									
103G.2	2' - 10"	7' - 0"	F		WD	CLR				WD		
103H.2	3' - 0"	7' - 0"	F		WD	CLR				WD		
103I.2	5' - 10"	7' - 6 11/16"	B		WD	CLR		N/A		WD		
103J.2	0' - 0"	0' - 0"			WD	CLR				WD		
104.2	3' - 0"	7' - 0"	F					20 MIN				
104A.2	2' - 8"	7' - 0"	F		WD	CLR				WD		
104B.2	3' - 0"	7' - 0"	F		WD	CLR				WD		
104C.2	3' - 0"	7' - 0"	F		WD	CLR				WD		
104D.2	3' - 0"	7' - 0"	F		WD	CLR				WD		
104E.2	5' - 10"	7' - 6 11/16"	B		WD	CLR		N/A		WD		
104F.2	0' - 0"	0' - 0"			WD	CLR				WD		
104G.2	6' - 0"	8' - 0"										
105.2	3' - 0"	7' - 0"	F					20				
105A.2	2' - 6"	7' - 0"	F		WD	CLR				WD		
105B.2	2' - 0"	7' - 0"	F		WD	CLR				WD		
105C.2	3' - 0"	7' - 0"	F		WD	CLR				WD		
105D.2	5' - 10"	7' - 6 11/16"	B		WD	CLR		N/A		WD		
105F.2	2' - 8"	7' - 8"	FG									
105G.2	2' - 10"	7' - 0"	F		WD	CLR				WD		
105H.2	3' - 0"	7' - 0"	F		WD	CLR				WD		
105I.2	5' - 10"	7' - 6 11/16"	B		WD	CLR		N/A		WD		
105J.2	0' - 0"	0' - 0"			WD	CLR				WD		
106.2	3' - 0"	7' - 0"	F					20 MIN				
106A.2	2' - 8"	7' - 0"	F		WD	CLR				WD		
106B.2	3' - 0"	7' - 0"	F		WD	CLR				WD		
106C.2	3' - 0"	7' - 0"	F		WD	CLR				WD		
106D.2	3' - 0"	7' - 0"	F		WD	CLR				WD		
106E.2	5' - 10"	7' - 6 11/16"	B		WD	CLR		N/A		WD		
106F.2	0' - 0"	0' - 0"			WD	CLR				WD		
106G.2	2' - 8"	7' - 10"	FG									
107.2	3' - 0"	7' - 0"	F					20 MIN				
107A.2	2' - 8"	7' - 0"	F		WD	CLR				WD		
107B.2	2' - 8"	7' - 0"	F		WD	CLR				WD		
107C.2	3' - 0"	7' - 0"	F		WD	CLR				WD		
107D.2	5' - 10"	7' - 6 11/16"	B		WD	CLR		N/A		WD		
107E.2	0' - 0"	0' - 0"			WD	CLR				WD		
107F.2	3' - 0"	7' - 0"	F		WD	CLR				WD		
107G.2	3' - 0"	7' - 0"	F		WD	CLR				WD		
107H.2	5' - 10"	7' - 6 11/16"	B		WD	CLR		N/A		WD		
107J.2	3' - 0"	7' - 0"	F		WD	CLR				WD		
107K.2	2' - 8"	7' - 0"	F		WD	CLR				WD		
107L.2	6' - 0"	8' - 0"										
108.2	3' - 0"	7' - 0"	F		WD	CLR		20 MIN		WD		
108A.2	2' - 8"	7' - 0"	F		WD	CLR				WD		
108B.2	2' - 6"	7' - 0"	F		WD	CLR				WD		
108C.2	3' - 0"	7' - 0"	F		WD	CLR				WD		
108D.2	5' - 10"	7' - 6 11/16"	B		WD	CLR		N/A		WD		
108E.2	0' - 0"	0' - 0"			WD	CLR				WD		
108F.2	3' - 0"	8' - 0"	FG									

DOOR SCHEDULE - BUILDING 2 - Level 1												
DOOR NO.	WIDTH	HEIGHT	DOOR TYPE	HARDWARE	DOOR				FRAME			COMMENTS
					MATERIAL	FINISH	GLASS TYPE	FIRE RATING	TYPE	MATERIAL	FINISH	
108G.2	3' - 0"	7' - 0"	F		WD	CLR				WD		
108H.2	3' - 0"	7' - 0"	F		WD	CLR				WD		
108I.2	5' - 10"	7' - 6 11/16"	B		WD	CLR		N/A		WD		
108J.2	0' - 0"	0' - 0"			WD	CLR				WD		
EL100.2	4' - 0"	7' - 0"	F									
J101.2	4' - 0"	7' - 0"	F					20 MIN.				
M101.2	4' - 0"	7' - 0"	F		WD			20 MIN.		HM		
M102.2	4' - 0"	7' - 0"	F					20 MIN.				
M103.2	4' - 0"	7' - 0"	F					20 MIN.				
M104.2	4' - 0"	7' - 0"	F					20 MIN.				
M105.2	4' - 0"	7' - 0"	F					20 MIN.				
M106.2	4' - 0"	7' - 0"	F					20 MIN.				
M107.2	4' - 0"	7' - 0"	F					20 MIN.				
M108.2	4' - 0"	7' - 0"	F		WD	CLR		20 MIN.		WD		
S100A.2	3' - 4"	7' - 0"	F									
S100B.2	3' - 4"	9' - 11 7/8"	FG									
S101A.2	3' - 4"	7' - 0"						45 MIN				
S101B.2	3' - 4"	7' - 0"						45 MIN				
S102A.2	3' - 4"	7' - 0"										
S102B.2	3' - 4"	7' - 0"										
T100.2	6' - 0"	7' - 0"										
T101.2	4' - 0"	7' - 0"	F					45 MIN.				
Grand total: 103												

**DOOR TYPES**



**ARCHITECTURAL CODE REVIEW SET**



Pittsford Canalside Properties, LLC  
**WESTPORT CROSSING**  
 75 MONROE AVE  
 PITTSFORD, NY 14534

REV. #	DESCRIPTION	DATE

JOB NO.	2101
SCALE	1/4" = 1'-0"
ISSUE DATE	03/09/2023
DRAWN BY	XXX
CHECKED BY	XXX

THIS IS A SINGLE SHEET OF A COHESIVE SET OF CONSTRUCTION DOCUMENTS (INCLUDING DRAWINGS AND SPECIFICATIONS). INTERPRETATION OF THE INFORMATION AS PRESENTED SHOULD BE BASED ON THE ENTIRE SET OF DOCUMENTS.

DRAWING TITLE  
**BLDG 2 - DOOR SCHEDULE**

**A802.2**

ISSUED FOR ARCHITECTURAL AND CODE REVIEW

DOOR SCHEDULE - BUILDING 2 - Level 2												
DOOR NO.	WIDTH	HEIGHT	DOOR TYPE	HARDWARE	DOOR				FRAME			COMMENTS
					MATERIAL	FINISH	GLASS TYPE	FIRE RATING	TYPE	MATERIAL	FINISH	
201.2	3' - 0"	7' - 0"	F					20 MIN				
201B.2	2' - 8"	7' - 0"	F		WD	CLR				WD		
201C.2	3' - 0"	7' - 0"	F		WD	CLR				WD		
201D.2	5' - 10"	7' - 6 11/16"	B		WD	CLR		N/A		WD		
201E.2	0' - 0"	0' - 0"			WD	CLR				WD		
201F.2	3' - 0"	7' - 0"	F		WD	CLR				WD		
201G.2	3' - 0"	7' - 0"	F		WD	CLR				WD		
201H.2	5' - 10"	7' - 6 11/16"	B		WD	CLR		N/A		WD		
201J.2	3' - 0"	7' - 0"	F		WD	CLR				WD		
201K.2	2' - 8"	7' - 0"	F		WD	CLR				WD		
202.2	3' - 0"	7' - 0"	F					20 MIN				
202A.2	2' - 8"	7' - 0"	F		WD	CLR				WD		
202B.2	2' - 8"	7' - 0"	F		WD	CLR				WD		
202C.2	3' - 0"	7' - 0"	F		WD	CLR				WD		
202D.2	5' - 10"	7' - 6 11/16"	B		WD	CLR		N/A		WD		
202E.2	0' - 0"	0' - 0"			WD	CLR				WD		
202F.2	3' - 0"	7' - 0"	F		WD	CLR				WD		
202G.2	3' - 0"	7' - 0"	F		WD	CLR				WD		
202H.2	5' - 10"	7' - 6 11/16"	B		WD	CLR		N/A		WD		
202J.2	3' - 0"	7' - 0"	F		WD	CLR				WD		
202K.2	2' - 8"	7' - 0"	F		WD	CLR				WD		
202L.2	2' - 8"	7' - 10"	FG									
203.2	3' - 0"	7' - 0"	F					20 MIN				
203A.2	2' - 6"	7' - 0"	F		WD	CLR				WD		
203B.2	2' - 0"	7' - 0"	F		WD	CLR				WD		
203C.2	3' - 0"	7' - 0"	F		WD	CLR				WD		
203D.2	5' - 10"	7' - 6 11/16"	B		WD	CLR		N/A		WD		
203G.2	2' - 10"	7' - 0"	F		WD	CLR				WD		
203H.2	3' - 0"	7' - 0"	F		WD	CLR				WD		
203I.2	5' - 10"	7' - 6 11/16"	B		WD	CLR		N/A		WD		
203J.2	2' - 8"	7' - 8"	FG									
204.2	3' - 0"	7' - 0"	F					20 MIN				
204D.2	3' - 0"	7' - 0"	F		WD	CLR				WD		
204E.2	5' - 10"	7' - 6 11/16"	B		WD	CLR		N/A		WD		
204F.2	3' - 0"	7' - 0"	F		WD	CLR				WD		
204G.2	6' - 0"	8' - 0"										
205.2	3' - 0"	7' - 0"	F					20 MIN				
205A.2	2' - 6"	7' - 0"	F		WD	CLR				WD		
205B.2	2' - 0"	7' - 0"	F		WD	CLR				WD		
205C.2	3' - 0"	7' - 0"	F		WD	CLR				WD		
205D.2	5' - 10"	7' - 6 11/16"	B		WD	CLR		N/A		WD		
205G.2	2' - 10"	7' - 0"	F		WD	CLR				WD		
205H.2	3' - 0"	7' - 0"	F		WD	CLR				WD		
205I.2	5' - 10"	7' - 6 11/16"	B		WD	CLR		N/A		WD		
205J.2	2' - 8"	7' - 8"	FG									
206.2	3' - 0"	7' - 0"	F					20 MIN				
206A.2	2' - 8"	7' - 0"	F		WD	CLR				WD		
206B.2	3' - 0"	7' - 0"	F		WD	CLR				WD		
206D.2	3' - 0"	7' - 0"	F		WD	CLR				WD		
206E.2	5' - 10"	7' - 6 11/16"	B		WD	CLR		N/A		WD		
206F.2	3' - 0"	7' - 0"	F		WD	CLR				WD		
206G.2	2' - 8"	7' - 10"	FG									
207.2	3' - 0"	7' - 0"	F					20 MIN				
207B.2	2' - 8"	7' - 0"	F		WD	CLR				WD		
207C.2	3' - 0"	7' - 0"	F		WD	CLR				WD		
207D.2	5' - 10"	7' - 6 11/16"	B		WD	CLR		N/A		WD		
207E.2	0' - 0"	0' - 0"			WD	CLR				WD		
207F.2	3' - 0"	7' - 0"	F		WD	CLR				WD		
207G.2	3' - 0"	7' - 0"	F		WD	CLR				WD		
207H.2	5' - 10"	7' - 6 11/16"	B		WD	CLR		N/A		WD		
207J.2	3' - 0"	7' - 0"	F		WD	CLR				WD		
207K.2	2' - 8"	7' - 0"	F		WD	CLR				WD		
207L.2	6' - 0"	8' - 0"										
208.2	3' - 0"	7' - 0"	F		WD	CLR		20 MIN		WD		
208A.2	2' - 8"	7' - 0"	F		WD	CLR				WD		
208B.2	2' - 6"	7' - 0"	F		WD	CLR				WD		
208C.2	3' - 0"	7' - 0"	F		WD	CLR				WD		
208D.2	5' - 10"	7' - 6 11/16"	B		WD	CLR		N/A		WD		
208E.2	0' - 0"	0' - 0"			WD	CLR				WD		
208F.2	3' - 0"	8' - 0"	FG									
208G.2	3' - 0"	7' - 0"	F		WD	CLR				WD		
208H.2	3' - 0"	7' - 0"	F		WD	CLR				WD		
208I.2	5' - 10"	7' - 6 11/16"	B		WD	CLR		N/A		WD		
208J.2	0' - 0"	0' - 0"			WD	CLR				WD		
J201.2	4' - 0"	7' - 0"	F					20 MIN.				
M201.2	4' - 0"	7' - 0"	F					20 MIN.				
M202.2	4' - 0"	7' - 0"	F					20 MIN.				
M203.2	4' - 0"	7' - 0"	F					20 MIN.				
M204.2	4' - 0"	7' - 0"	F					20 MIN.				
M205.2	4' - 0"	7' - 0"	F					20 MIN.				
M206.2	4' - 0"	7' - 0"	F					20 MIN.				
M207.2	4' - 0"	7' - 0"	F					20 MIN.				

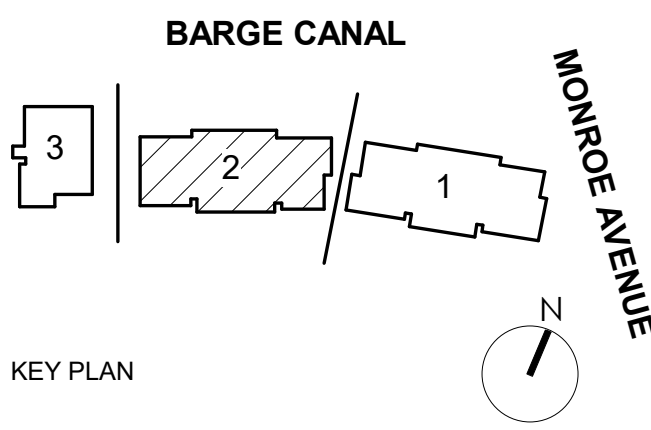
DOOR SCHEDULE - BUILDING 2 - Level 2												
DOOR NO.	WIDTH	HEIGHT	DOOR TYPE	HARDWARE	DOOR				FRAME			COMMENTS
					MATERIAL	FINISH	GLASS TYPE	FIRE RATING	TYPE	MATERIAL	FINISH	
M208.2	4' - 0"	7' - 0"	F		WD	CLR		20 MIN.		WD		
S201.2	3' - 0"	7' - 0"	F					45 MIN.				
S202.2	3' - 0"	7' - 0"	F					90 MIN.				
T201.2	4' - 0"	7' - 0"	F					45 MIN.				
Grand total: 86												



BUFFALO | ROCHESTER  
www.cjsarchitects.com



ARCHITECTURAL CODE  
REVIEW SET



Pittsford Canalside Properties, LLC

WESTPORT  
CROSSING

75 MONROE AVE  
PITTSFORD, NY 14534

REV. #	DESCRIPTION	DATE

JOB NO. 2101

SCALE

ISSUE DATE 03/09/2023

DRAWN BY XXX

CHECKED BY XXX

THIS IS A SINGLE SHEET OF A COHESIVE SET OF CONSTRUCTION DOCUMENTS (INCLUDING DRAWINGS AND SPECIFICATIONS). INTERPRETATION OF THE INFORMATION AS PRESENTED SHOULD BE BASED ON THE ENTIRE SET OF DOCUMENTS.

DRAWING TITLE

BLDG 2 - DOOR  
SCHEDULE

A803.2

ISSUED FOR ARCHITECTURAL AND CODE REVIEW

DOOR SCHEDULE - BUILDING 2- Level 3												
DOOR NO.	WIDTH	HEIGHT	DOOR TYPE	HARDWARE	DOOR				FRAME			COMMENTS
					MATERIAL	FINISH	GLASS TYPE	FIRE RATING	TYPE	MATERIAL	FINISH	
301.2	3' - 0"	7' - 0"	F						20 MIN			
301A.2	2' - 10"	7' - 0"	F		WD	CLR					WD	
301B.2	2' - 6"	7' - 0"	F		WD	CLR					WD	
301C.2	3' - 0"	7' - 0"	F		WD	CLR					WD	
301D.2	3' - 0"	7' - 0"	F		WD	CLR					WD	
301E.2	5' - 10"	7' - 6 11/16"	B		WD	CLR		N/A			WD	
301F.2	0' - 0"	0' - 0"			WD	CLR					WD	
301G.2	2' - 10"	7' - 0"	F		WD	CLR					WD	
301H.2	5' - 10"	7' - 6 11/16"	B		WD	CLR		N/A			WD	
301I.2	0' - 0"	0' - 0"			WD	CLR					WD	
301J.2	3' - 0"	7' - 0"										
302.2	3' - 0"	7' - 0"	F					20 MIN				
302A.2	2' - 8"	7' - 0"	F		WD	CLR					WD	
302B.2	2' - 8"	7' - 0"	F		WD	CLR					WD	
302C.2	3' - 0"	7' - 0"	F		WD	CLR					WD	
302D.2	5' - 10"	7' - 6 11/16"	B		WD	CLR		N/A			WD	
302E.2	0' - 0"	0' - 0"			WD	CLR					WD	
302F.2	3' - 0"	7' - 0"	F		WD	CLR					WD	
302G.2	3' - 0"	7' - 0"	F		WD	CLR					WD	
302H.2	5' - 10"	7' - 6 11/16"	B		WD	CLR		N/A			WD	
302J.2	3' - 0"	7' - 0"	F		WD	CLR					WD	
302K.2	2' - 8"	7' - 0"	F		WD	CLR					WD	
302L.2	2' - 8"	7' - 10"	FG									
303.2	3' - 0"	7' - 0"	F					20 MIN				
303A.2	3' - 0"	7' - 0"	F		WD	CLR					WD	
303B.2	5' - 10"	7' - 6 11/16"	B		WD	CLR		N/A			WD	
303C.2	3' - 0"	7' - 0"	F		WD	CLR					WD	
303D.2	2' - 10"	7' - 0"	F									
303E.2	2' - 8"	7' - 0"	F		WD	CLR					WD	
303F.2	2' - 8"	7' - 0"	F		WD	CLR					WD	
303G.2	5' - 10"	7' - 6 11/16"	B		WD	CLR		N/A			WD	
303H.2	0' - 0"	0' - 0"			WD	CLR					WD	
303I.2	3' - 0"	7' - 10"	FG									
304.2	3' - 0"	7' - 0"	F					20 MIN				
304A.2	2' - 8"	7' - 0"	F		WD	CLR					WD	
304D.2	3' - 0"	7' - 0"	F		WD	CLR					WD	
304E.2	5' - 10"	7' - 6 11/16"	B		WD	CLR		N/A			WD	
304F.2	3' - 0"	7' - 0"	F		WD	CLR					WD	
304G.2	6' - 0"	8' - 0"										
305.2	3' - 0"	7' - 0"	F					20 MIN				
305A.2	2' - 8"	7' - 0"	F		WD	CLR					WD	
305D.2	3' - 0"	7' - 0"	F		WD	CLR					WD	
305E.2	5' - 10"	7' - 6 11/16"	B		WD	CLR		N/A			WD	
305F.2	3' - 0"	7' - 0"	F		WD	CLR					WD	
305G.2	6' - 0"	8' - 0"										
306.2	3' - 0"	7' - 0"	F					20 MIN				
306A.2	2' - 4"	7' - 0"	F									
306B.2	2' - 6"	7' - 0"	F									
306C.2	3' - 0"	7' - 0"	F									
306D.2	3' - 0"	7' - 0"	F									
306E.2	5' - 10"	7' - 6 11/16"	B					N/A				
306F.2	0' - 0"	0' - 0"										
306G.2	3' - 0"	7' - 0"	F									
306H.2	3' - 0"	7' - 0"	F									
306I.2	5' - 10"	7' - 6 11/16"	B					N/A				
306J.2	5' - 10"	7' - 6 11/16"	B					N/A				
306K.2	3' - 0"	7' - 0"	F									
306L.2	5' - 10"	7' - 6 11/16"	B					N/A				
306M.2	3' - 0"	7' - 0"										
307A.2	2' - 8"	7' - 0"	F		WD	CLR					WD	
307B.2	2' - 6"	7' - 0"	F		WD	CLR					WD	
307C.2	3' - 0"	7' - 0"	F		WD	CLR					WD	
307D.2	5' - 10"	7' - 6 11/16"	B		WD	CLR		N/A			WD	
307E.2	0' - 0"	0' - 0"			WD	CLR					WD	
307F.2	2' - 9 1/8"	7' - 0"	FG									
307G.2	3' - 0"	7' - 0"	F		WD	CLR					WD	
307H.2	3' - 0"	7' - 0"	F		WD	CLR					WD	
307I.2	5' - 10"	7' - 6 11/16"	B		WD	CLR		N/A			WD	
307J.2	0' - 0"	0' - 0"			WD	CLR					WD	
J301.2	4' - 0"	7' - 0"	F					20 MIN.				
M301.2	4' - 0"	7' - 0"	F					20 MIN.				
M302.2	4' - 0"	7' - 0"	F					20 MIN.				
M303.2	3' - 0"	7' - 0"	F					20 MIN.				
M304.2	4' - 0"	7' - 0"	F					20 MIN.				
M305.2	4' - 0"	7' - 0"	F					20 MIN.				
M306.2	4' - 0"	7' - 0"	F					20 MIN.				
M307.2	4' - 0"	7' - 0"	F		WD	CLR		20 MIN.			WD	
S302.2	3' - 0"	7' - 0"	F					90 MIN.				
T301.2	4' - 0"	7' - 0"	F					45 MIN.				

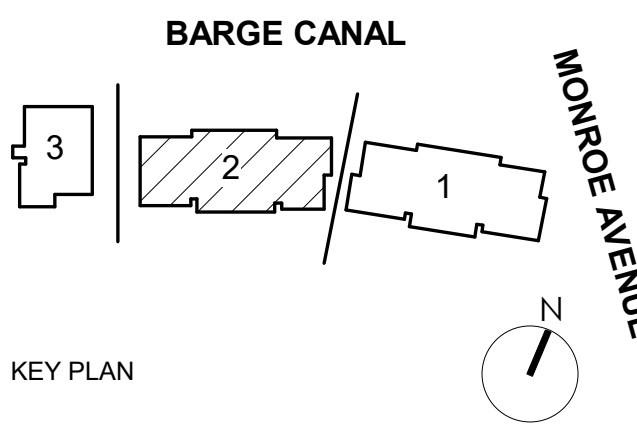
Grand total: 79



BUFFALO | ROCHESTER  
www.cjsarchitects.com



ARCHITECTURAL CODE  
REVIEW SET



Pittsford Canalside Properties,  
LLC

WESTPORT  
CROSSING

75 MONROE AVE  
PITTSFORD, NY 14534

REV. #	DESCRIPTION	DATE
--------	-------------	------

JOB NO. 2101

SCALE

ISSUE DATE 03/09/2023

DRAWN BY XXX

CHECKED BY XXX

THIS IS A SINGLE SHEET OF A COHESIVE SET OF CONSTRUCTION DOCUMENTS (INCLUDING DRAWINGS AND SPECIFICATIONS). INTERPRETATION OF THE INFORMATION AS PRESENTED SHOULD BE BASED ON THE ENTIRE SET OF DOCUMENTS.

DRAWING TITLE

BLDG 2 - DOOR  
SCHEDULE

A804.2

ISSUED FOR ARCHITECTURAL AND CODE REVIEW

WINDOW SCHEDULE - BUILDING 2 - LEVEL 1						
From Room: Number	From Room: Name	Type Mark	Width	Height	Sill Height	Comments
102.2	UNIT 3A.2	W2	3'-0"	6'-0"	2'-0"	
102.2	UNIT 3A.2	W2	3'-0"	6'-0"	2'-0"	
102.2: 2						
103.2	UNIT 2A.2	W17	3'-0"	5'-0"	3'-0"	
103.2	UNIT 2A.2	W17	3'-0"	5'-0"	3'-0"	
103.2: 2						
104.2	UNIT 1A.2	W15	3'-0"	5'-0"	3'-0"	
104.2: 1						
107.2	UNIT 3A.2	W21	6'-0"	6'-0"	2'-0"	
107.2	UNIT 3A.2	W21	6'-0"	6'-0"	2'-0"	
107.2	UNIT 3A.2	W1	3'-0"	6'-0"	2'-0"	
107.2: 3						
108.2	UNIT 2B.2	W7	3'-0"	6'-0"	2'-0"	
108.2	UNIT 2B.2	W25	3'-0"	6'-0"	2'-0"	
108.2	UNIT 2B.2	W25	3'-0"	6'-0"	2'-0"	
108.2	UNIT 2B.2	W7	3'-0"	6'-0"	2'-0"	
108.2: 4						
Grand total: 12						

WINDOW SCHEDULE - BUILDING 2 - LEVEL 2						
From Room: Number	From Room: Name	Type Mark	Width	Height	Sill Height	Comments
202.2	UNIT 3A.2	W2	3'-0"	6'-0"	2'-0"	
202.2	UNIT 3A.2	W2	3'-0"	6'-0"	2'-0"	
202.2	UNIT 3A.2	W24	6'-0"	6'-0"	2'-0"	
202.2	UNIT 3A.2	W2	3'-0"	6'-0"	2'-0"	
202.2: 4						
203.2	UNIT 2A.2	W17	3'-0"	5'-0"	3'-0"	
203.2	UNIT 2A.2	W17	3'-0"	5'-0"	3'-0"	
203.2: 2						
204.2	UNIT 1A.2	W15	3'-0"	5'-0"	3'-0"	
204.2	UNIT 1A.2	W15	3'-0"	5'-0"	3'-0"	
204.2: 2						
205.2	UNIT 2A.2	W24	6'-0"	6'-0"	2'-0"	
205.2: 1						
206.2	UNIT 1A.2	W15	3'-0"	5'-0"	3'-0"	
206.2	UNIT 1A.2	W15	3'-0"	5'-0"	3'-0"	
206.2: 2						
207.2	UNIT 3A.2	W21	6'-0"	6'-0"	2'-0"	
207.2	UNIT 3A.2	W21	6'-0"	6'-0"	2'-0"	
207.2	UNIT 3A.2	W1	3'-0"	6'-0"	2'-0"	
207.2: 3						
208.2	UNIT 2B.2	W7	3'-0"	6'-0"	2'-0"	
208.2	UNIT 2B.2	W25	3'-0"	6'-0"	2'-0"	
208.2	UNIT 2B.2	W3	3'-0"	6'-0"	2'-0"	
208.2	UNIT 2B.2	W25	3'-0"	6'-0"	2'-0"	
208.2	UNIT 2B.2	W3	3'-0"	6'-0"	2'-0"	
208.2	UNIT 2B.2	W25	3'-0"	6'-0"	2'-0"	
208.2	UNIT 2B.2	W7	3'-0"	6'-0"	2'-0"	
208.2: 7						
S302.2	STAIR	W32	3'-0"	3'-0"	11'-0"	
S302.2: 1						
Grand total: 22						

WINDOW SCHEDULE - BUILDING 2 - LEVEL 3						
From Room: Number	From Room: Name	Type Mark	Width	Height	Sill Height	Comments
301.2	UNIT 2C.2	W3	3'-0"	6'-0"	2'-0"	
301.2: 1						
302.2	UNIT 3A.2	W2	3'-0"	6'-0"	2'-0"	
302.2	UNIT 3A.2	W2	3'-0"	6'-0"	2'-0"	
302.2	UNIT 3A.2	W24	6'-0"	6'-0"	2'-0"	
302.2	UNIT 3A.2	W2	3'-0"	6'-0"	2'-0"	
302.2: 4						
303.2	UNIT 2D.2	W1	3'-0"	6'-0"	2'-0"	
303.2	UNIT 2D.2	W1	3'-0"	6'-0"	2'-0"	
303.2: 2						
304.2	UNIT 1A.2	W15	3'-0"	5'-0"	3'-0"	
304.2	UNIT 1A.2	W22	3'-0"	5'-0"	3'-0"	
304.2: 2						
306.2	UNIT 3B.2	W1	3'-0"	6'-0"	2'-0"	
306.2	UNIT 3B.2	W21	6'-0"	6'-0"	2'-0"	
306.2	UNIT 3B.2	W1	3'-0"	6'-0"	2'-0"	
306.2	UNIT 3B.2	W21	6'-0"	6'-0"	2'-0"	
306.2: 4						
307.2	UNIT 2B.2	W17	3'-0"	6'-0"	1'-4"	
307.2	UNIT 2B.2	W19	3'-0"	6'-0"	1'-0"	
307.2	UNIT 2B.2	W17	3'-0"	6'-0"	1'-0"	
307.2	UNIT 2B.2	W19	3'-0"	6'-0"	1'-0"	
307.2: 4						
S302.2	STAIR	W32	3'-0"	3'-0"	11'-0"	
S302.2: 1						
Grand total: 18						

### GENERAL WINDOW NOTES

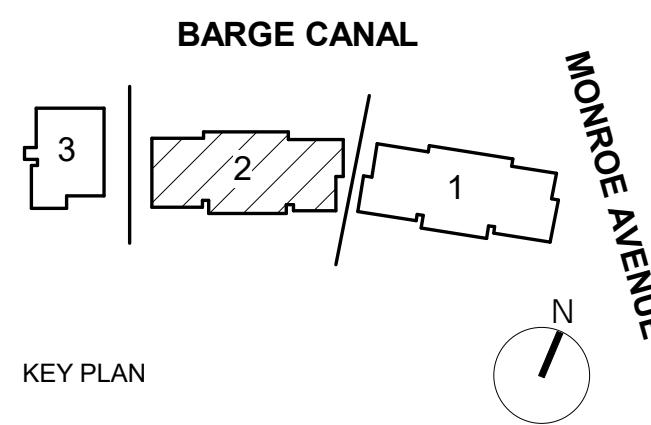
1. ALL PROPOSED WINDOW DETAILS ON SHEETS A-810 THRU A812 ARE DRAWN BY WINDOW MFR WEATHER SHIELD.
2. ALL PROPOSED WINDOWS TO BE FROM MFR'S 'PREMIUM SERIES' - ALUM CLAD WOOD WINDOWS WITH FACTORY AAMA 2605 FINISH ON THE EXTERIOR. INTERIOR TO BE PINE FACTORY PRIMED & PAINTED, COLOR TBD BY INTERIOR DESIGNER.
3. DRAWINGS ARE FOR COMPARING WINDOW PROFILES ONLY AND DOES NOT DETAIL METHOD FOR ATTACHMENT INTO ADJACENT CONSTRUCTION. COORDINATE WITH WINDOW MFR FOR ALL BUILDING CONSTRUCTION DETAILS.
4. ALL ORIGINAL WOOD WINDOWS TO BE RESTORED WILL INCLUDE BUT WILL NOT BE LIMITED TO SCRAPING & PAINTING, STAINING, RESTORING OPERABILITY, REPLACING ANY MISSING/BROKEN PARTS WITH SIMILAR QUALITY, MATCHING PROFILE, MATERIAL & COLOR.



BUFFALO | ROCHESTER  
www.cjsarchitects.com



### ARCHITECTURAL CODE REVIEW SET



Pittsford Canalside Properties, LLC

## WESTPORT CROSSING

75 MONROE AVE  
PITTSFORD, NY 14534

REV. #	DESCRIPTION	DATE

JOB NO.	2101
SCALE	1/4" = 1'-0"
ISSUE DATE	03/09/2023
DRAWN BY	XXX
CHECKED BY	XXX

THIS IS A SINGLE SHEET OF A COHESIVE SET OF CONSTRUCTION DOCUMENTS (INCLUDING DRAWINGS AND SPECIFICATIONS). INTERPRETATION OF THE INFORMATION AS PRESENTED SHOULD BE BASED ON THE ENTIRE SET OF DOCUMENTS.

DRAWING TITLE

### BLDG 2 - WINDOW SCHEDULE BY ROOM/UNIT

# A807.2

ISSUED FOR ARCHITECTURAL AND CODE REVIEW



2 BLDG 3 - SOUTH ELEVATION  
A200.3 1/8" = 1'-0"



1 BLDG 3 - NORTH ELEVATION  
A200.3 1/8" = 1'-0"

## EXTERIOR MATERIALS LEGEND

ALL MATERIALS NOT NECESSARILY USED

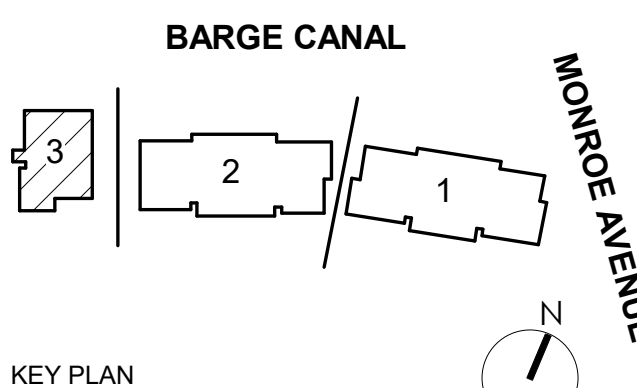
### GENERAL NOTES:

- 1) Window Exterior Trim to match wall color, Exceptions are Light grey Siding and Parklex siding
- 2) Gabled roofs have black metal half round gutters and round down spouts
- 3) Flat roofs will have galvanized metal scuppers and round down spouts
- 4) Coping caps will be black metal on all walls with flat roofs. Exceptions are noted
- 5) Horizontal and vertical wall trim to match the wall cladding color. Exceptions are noted
- 6) Wall corner trim is an 8" wide board per face and to match wall material for horizontal siding and vertical Board and Baton Siding, color to match wall color
- 7) Wall vents for ERV(6" Dia) and Dryer (4" Dia) are not visible but will be present for every residential unit
- 8) Balcony details are on Sheet AT003 : B1-10' WIDE , B2-10' WIDE , B3-7' WIDE

MATERIAL IDENTIFICATION #:	MATERIAL BASIS OF DESIGN PRODUCT:
1	BOARD & BATTEN VERTICAL SIDING, 8" MODULE, WHITE; MANUFACTURER: JAMES HARDIE PRODUCT: HARDIE® PANEL VERTICAL SIDING SMOOTH
2	BOARD & BATTEN VERTICAL SIDING, 8" MODULE, RED; MANUFACTURER: JAMES HARDIE PRODUCT: HARDIE® PANEL VERTICAL SIDING SMOOTH
3	HORIZONTAL SIDING(FIBER CEMENT), 8" EXPOSURE, ARCTIC WHITE; MANUFACTURER: JAMES HARDIE PRODUCT: HARDIE® PLANK LAP SIDING SMOOTH
4	HORIZONTAL SIDING(FIBER CEMENT), 8" EXPOSURE, LIGHT GRAY; MANUFACTURER: JAMES HARDIE PRODUCT: HARDIE® PLANK LAP SIDING SMOOTH
5	HORIZONTAL SIDING(FIBER CEMENT), 4" EXPOSURE, BLACK ASH; MANUFACTURER: JAMES HARDIE PRODUCT: HARDIE® PLANK LAP SIDING SMOOTH
6	HORIZONTAL SIDING(FIBER CEMENT), 8" EXPOSURE, SAVANNAH GREEN; MANUFACTURER: JAMES HARDIE PRODUCT: HARDIE® PLANK LAP SIDING SMOOTH
7	HORIZONTAL SIDING(FIBER CEMENT), 8" EXPOSURE, BLUE; MANUFACTURER: JAMES HARDIE PRODUCT: HARDIE® PLANK LAP SIDING SMOOTH
8	RED BRICK VENEER; MANUFACTURER: GLEN-GERY PRODUCT: SIZE: UTILITY
9	BLACK BRICK VENEER; MANUFACTURER: GLEN-GERY PRODUCT: SIOUX CITY VINTAGE BLACK VELOUR SIZE: UTILITY
10	FAUX WOOD SIDING(PRESSED FIBER PANEL); MANUFACTURER: Parklex PRODUCT:
11	STANDING SEAM METAL SIDING, BLACK/GRAY; MANUFACTURER: PRODUCT:
12	FLAT SEAM METAL ROOFING; MANUFACTURER: PRODUCT:
13	WALL COPING #3 STANDING SEAM METAL ROOFING; MANUFACTURER: PRODUCT:
14	SHINGLE ROOFING; MANUFACTURER: PRODUCT:
15	HALF ROUND GALVANIZED STL GUTTER & PIPE DOWNSPOUTS; MANUFACTURER: PRODUCT:
16	HALF ROUND BLACK STL GUTTER & PIPE DOWNSPOUTS; MANUFACTURER: PRODUCT:
17	WALL COPING #1 (METAL) BLACK; MANUFACTURER: PRODUCT:
18	FACIA TRIM #1 6" BLACK; MANUFACTURER: PRODUCT:
19	FACIA TRIM #2 12" BLACK; MANUFACTURER: PRODUCT:
20	FACIA TRIM #3 6" WHITE; MANUFACTURER: PRODUCT:
21	FACIA TRIM #4 12" WHITE; MANUFACTURER: PRODUCT:



## ARCHITECTURAL CODE REVIEW SET



Pittsford Canalside Properties, LLC

## WESTPORT CROSSING

75 MONROE AVE  
PITTSFORD, NY 14534

REV. #	DESCRIPTION	DATE

JOB NO. 2101  
SCALE As indicated  
ISSUE DATE 03/09/2023  
DRAWN BY JB  
CHECKED BY DS

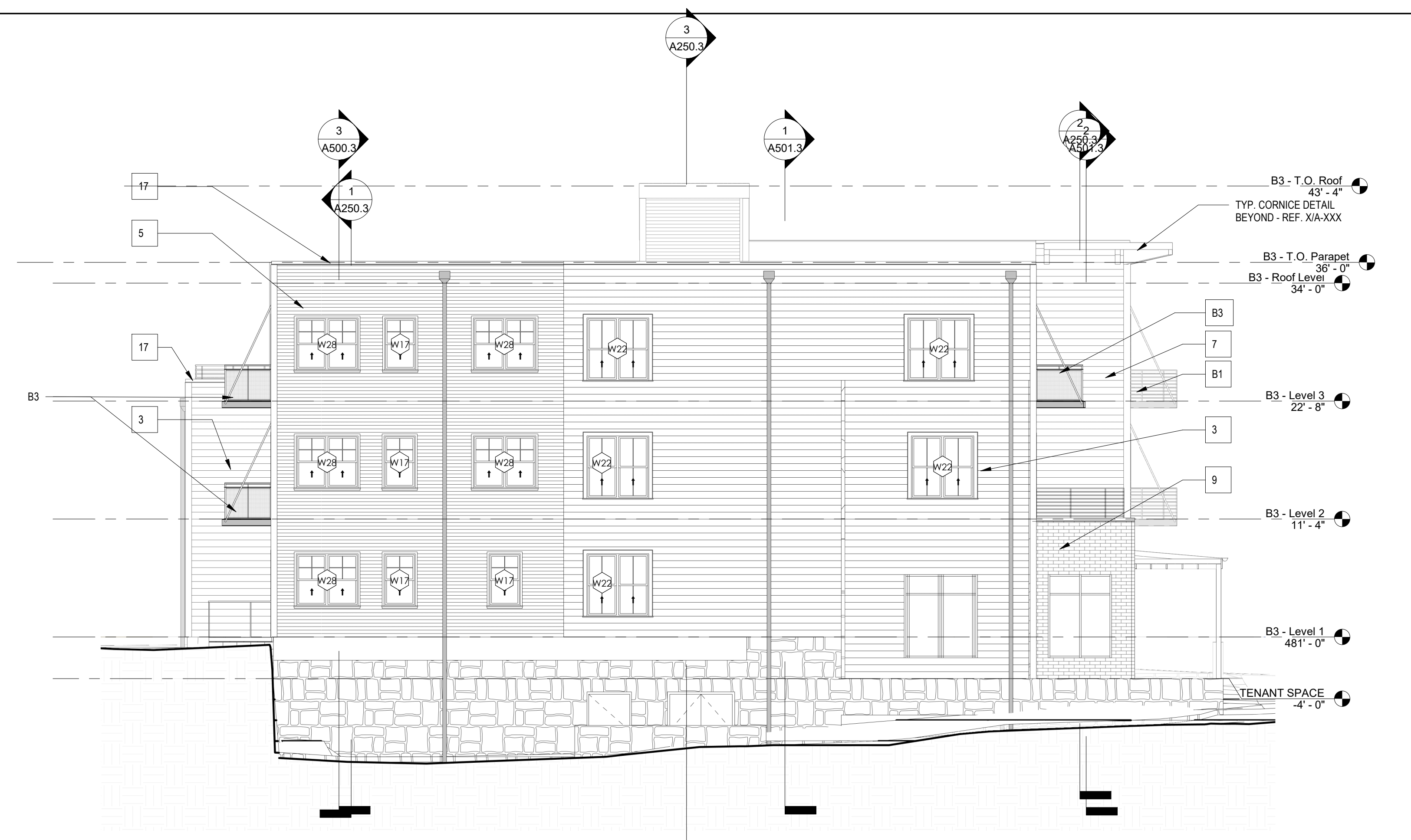
THIS IS A SINGLE SHEET OF A COHESIVE SET OF CONSTRUCTION DOCUMENTS (INCLUDING DRAWINGS AND SPECIFICATIONS). INTERPRETATION OF THE INFORMATION AS PRESENTED SHOULD BE BASED ON THE ENTIRE SET OF DOCUMENTS.

DRAWING TITLE

## BLDG 3 - EXTERIOR ELEVATIONS

# A200.3

ISSUED FOR ARCHITECTURAL AND CODE REVIEW



**1 BLDG 3 - EAST ELEVATION**  
A201.3 1/8" = 1'-0"



**2 BLDG 3 - WEST ELEVATION**  
A201.3 1/8" = 1'-0"

### EXTERIOR MATERIALS LEGEND

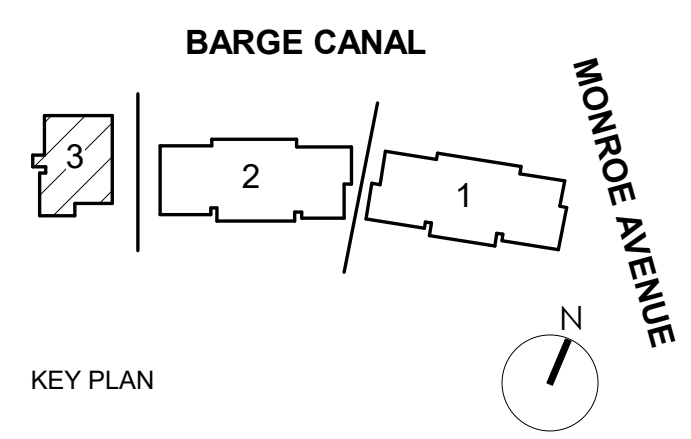
ALL MATERIALS NOT NECESSARILY USED

- GENERAL NOTES:  
 1) Window Exterior Trim to match wall color, Exceptions are Light grey Siding and Parklex siding  
 2) Gabled roofs have black metal half round gutters and round down spouts  
 3) Flat roofs will have galvanized metal scuppers and round down spouts  
 4) Coping caps will be black metal on all walls with flat roofs. Exceptions are noted  
 5) Horizontal and vertical wall trim to match the wall cladding color. Exceptions are noted  
 6) Wall corner trim is an 8" wide board per face and to match wall material for horizontal siding and vertical Board and Baton Siding, color to match wall color  
 7) Wall vents for ERV(6" Dia) and Dryer (4" Dia) are not visible but will be present for every residential unit  
 8) Balcony details are on Sheet AT003 : B1 -10' WIDE , B2 -10' WIDE , B3 -7' WIDE

MATERIAL IDENTIFICATION #:	MATERIAL BASIS OF DESIGN PRODUCT:
1	BOARD & BATTEN VERTICAL SIDING, 8" MODULE, WHITE; MANUFACTURER: JAMES HARDIE PRODUCT: HARDIE® PANEL VERTICAL SIDING SMOOTH
2	BOARD & BATTEN VERTICAL SIDING, 8" MODULE, RED; MANUFACTURER: JAMES HARDIE PRODUCT: HARDIE® PANEL VERTICAL SIDING SMOOTH
3	HORIZONTAL SIDING(FIBER CEMENT), 8" EXPOSURE, ARCTIC WHITE; MANUFACTURER: JAMES HARDIE PRODUCT: HARDIE® PLANK LAP SIDING SMOOTH
4	HORIZONTAL SIDING(FIBER CEMENT), 8" EXPOSURE, LIGHT GRAY; MANUFACTURER: JAMES HARDIE PRODUCT: HARDIE® PLANK LAP SIDING SMOOTH
5	HORIZONTAL SIDING(FIBER CEMENT), 4" EXPOSURE, BLACK ASH; MANUFACTURER: JAMES HARDIE PRODUCT: HARDIE® PLANK LAP SIDING SMOOTH
6	HORIZONTAL SIDING(FIBER CEMENT), 8" EXPOSURE, SAVANNAH GREEN; MANUFACTURER: JAMES HARDIE PRODUCT: HARDIE® PLANK LAP SIDING SMOOTH
7	HORIZONTAL SIDING(FIBER CEMENT), 8" EXPOSURE, BLUE; MANUFACTURER: JAMES HARDIE PRODUCT: HARDIE® PLANK LAP SIDING SMOOTH
8	RED BRICK VENEER; MANUFACTURER: GLEN-GERY PRODUCT: UTILITY
9	BLACK BRICK VENEER; MANUFACTURER: GLEN-GERY PRODUCT: SIOUX CITY VINTAGE BLACK VELOUR SIZE: UTILITY
10	FAUX WOOD SIDING(PRESSED FIBER PANEL); MANUFACTURER: Parklex PRODUCT:
11	STANDING SEAM METAL SIDING, BLACK/GRAY; MANUFACTURER: PRODUCT:
12	FLAT SEAM METAL ROOFING; MANUFACTURER: PRODUCT:
13	WALL COPING #3 STANDING SEAM METAL ROOFING; MANUFACTURER: PRODUCT:
14	SHINGLE ROOFING; MANUFACTURER: PRODUCT:
15	HALF ROUND GALVANIZED STL GUTTER & PIPE DOWNSPOUTS; MANUFACTURER: PRODUCT:
16	HALF ROUND BLACK STL GUTTER & PIPE DOWNSPOUTS; MANUFACTURER: PRODUCT:
17	WALL COPING #1 (METAL) BLACK; MANUFACTURER: PRODUCT:
18	FACIA TRIM #1 6" BLACK; MANUFACTURER: PRODUCT:
19	FACIA TRIM #2 12" BLACK; MANUFACTURER: PRODUCT:
20	FACIA TRIM #3 6" WHITE; MANUFACTURER: PRODUCT:
21	FACIA TRIM #4 12" WHITE; MANUFACTURER: PRODUCT:



### ARCHITECTURAL CODE REVIEW SET



Pittsford Canalside Properties, LLC  
**WESTPORT CROSSING**  
 75 MONROE AVE  
 PITTSFORD, NY 14534

REV. #	DESCRIPTION	DATE

JOB NO. 2101  
 SCALE As indicated  
 ISSUE DATE 03/09/2023  
 DRAWN BY JB  
 CHECKED BY DS

DRAWING TITLE  
**BLDG 3 - EXTERIOR ELEVATIONS**

**A201.3**

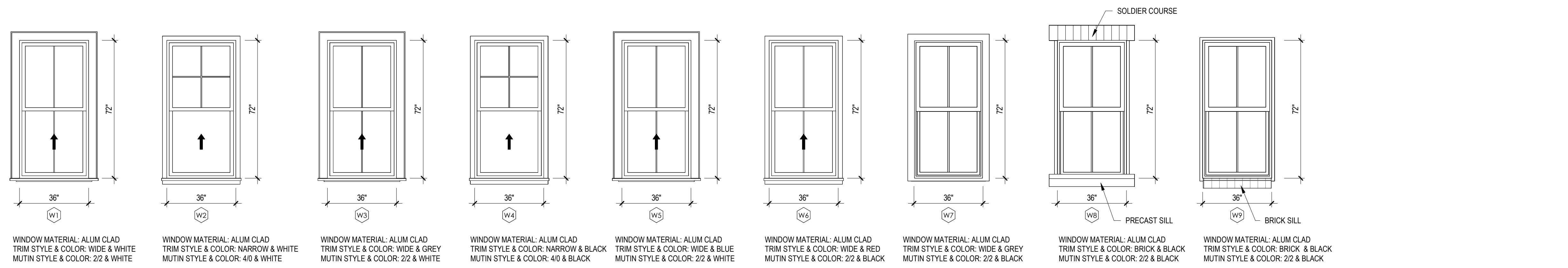
ISSUED FOR ARCHITECTURAL AND CODE REVIEW



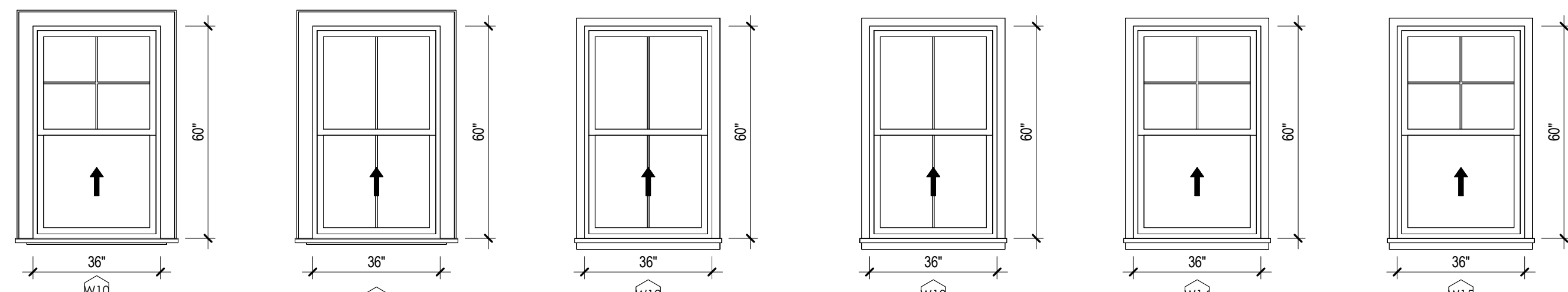
DOOR SCHEDULE - BUILDING 3												
DOOR NO.	WIDTH	HEIGHT	DOOR TYPE	HARDWARE	DOOR				FRAME			COMMENTS
					MATERIAL	FINISH	GLASS TYPE	FIRE RATING	TYPE	MATERIAL	FINISH	
<b>Basement Level</b>												
B101.3	3' - 0"	7' - 0"	F				20					
B102A.3	4' - 0"	7' - 0"	F				20 MIN.		WD			
B102B.3	6' - 0"	7' - 0"							WD			
B103A.3	3' - 0"	7' - 0"	F		WD		20		WD			
B103B.3	3' - 0"	7' - 0"	F				20		WD			
B104.3	5' - 8"	6' - 8"							WD			
C100.3	4' - 0"	7' - 0"	F				90		WD			
S100.3	3' - 0"	7' - 0"	F				90 MIN.		HM			
<b>TENANT SPACE</b>												
C001A.3	5' - 10"	8' - 0"										
C004.3	3' - 0"	7' - 0"	F									
C006.3	20' - 6"	8' - 6 11/16"					N/A					
C007.3	3' - 0"	7' - 0"	F									
C009.3	3' - 0"	7' - 0"	F									
<b>B3 - Level 1</b>												
101.3	3' - 0"	7' - 0"	F		WD	CLR	20		HM			
101A.3	2' - 4"	7' - 0"	F		WD	CLR						
101B.3	2' - 8"	7' - 0"	F		WD	CLR						
101C.3	3' - 0"	7' - 0"	F		WD	CLR						
101D.3	3' - 0"	7' - 0"	F		WD	CLR						
101E.3	5' - 10"	7' - 6 11/16"	B		WD	CLR	N/A					
101F.3	0' - 0"	0' - 0"			WD	CLR						
101G.3	3' - 0"	7' - 0"	F		WD	CLR						
101H.3	5' - 10"	7' - 6 11/16"	B		WD	CLR	N/A					
101I.3	0' - 0"	0' - 0"			WD	CLR						
102.3	3' - 0"	7' - 0"	F				20					
102A.3	3' - 0"	7' - 0"	F		WD	CLR			WD			
102B.3	3' - 0"	7' - 0"	F		WD	CLR			WD			
102C.3	5' - 10"	7' - 6 11/16"	B		WD	CLR	N/A		WD			
102D.3	0' - 0"	0' - 0"			WD	CLR			WD			
102E.3	6' - 0"	8' - 0"										
102F.3	3' - 0"	7' - 0"	F		WD	CLR			WD			
102G.3	5' - 10"	7' - 6 11/16"	B		WD	CLR	N/A		WD			
102G.3	0' - 0"	0' - 0"			WD	CLR			WD			
102H.3	0' - 0"	0' - 0"			WD	CLR			WD			
102I.3	2' - 8"	7' - 0"	F		WD	CLR			WD			
102J.3	2' - 8"	7' - 0"	F		WD	CLR			WD			
102K.3	2' - 8"	7' - 0"	F		WD	CLR			WD			
107G.3	0' - 0"	0' - 0"			WD	CLR			WD			
205J.3												
E101.3	0' - 0"	0' - 0"										
M101.3	4' - 0"	7' - 0"	F		WD	CLR	20 MIN.		HM			
M102.3	4' - 0"	7' - 0"	F									
S101A.3	3' - 4"	7' - 0"										
S101B.3	3' - 0"	7' - 0"	F				90 MIN.					
<b>B3 - Level 2</b>												
101L.3	6' - 0"	8' - 0"										
201.3	3' - 0"	7' - 0"	F		WD	CLR	20		HM			
201A.3	2' - 4"	7' - 0"	F		WD	CLR						
201B.3	2' - 8"	7' - 0"	F		WD	CLR						
201C.3	3' - 0"	7' - 0"	F		WD	CLR						
201D.3	3' - 0"	7' - 0"	F		WD	CLR						
201E.3	5' - 10"	7' - 6 11/16"	B		WD	CLR	N/A					
201F.3	0' - 0"	0' - 0"			WD	CLR						
201G.3	3' - 0"	7' - 0"	F		WD	CLR						
201H.3	5' - 10"	7' - 6 11/16"	B		WD	CLR	N/A					
201I.3	0' - 0"	0' - 0"			WD	CLR						
201J.3	2' - 9"	7' - 10"	FG									
202.3	3' - 0"	7' - 0"	F		WD	CLR	20 MIN		HM			
202A.3	2' - 4"	7' - 0"	F		WD	CLR			WD			
202B.3	2' - 8"	7' - 0"	F		WD	CLR			WD			
202C.3	3' - 0"	7' - 0"	F		WD	CLR			WD			
202D.3	3' - 0"	7' - 0"	F		WD	CLR			WD			
202E.3	5' - 10"	7' - 6 11/16"	B		WD	CLR	N/A		WD			
202F.3	0' - 0"	0' - 0"			WD	CLR			WD			
203.3	3' - 0"	7' - 0"	F		WD	CLR	20		HM			
203A.3	2' - 4"	7' - 0"	F		WD	CLR			WD			
203B.3	2' - 8"	7' - 0"	F		WD	CLR			WD			
203C.3	3' - 0"	7' - 0"	F		WD	CLR			WD			
203D.3	5' - 10"	7' - 6 11/16"	B		WD	CLR	N/A		WD			
203E.3	0' - 0"	0' - 0"			WD	CLR			WD			
203F.3	3' - 0"	7' - 0"	F		WD	CLR			WD			
203G.3	3' - 0"	7' - 0"	F		WD	CLR			WD			
203H.3	5' - 10"	7' - 6 11/16"	B		WD	CLR	N/A		WD			
203I.3	0' - 0"	0' - 0"			WD	CLR			WD			
203J.3	3' - 0"	8' - 0"	FG									
204.3	3' - 0"	7' - 0"	F		WD	CLR	20		HM			
204A.3	2' - 4"	7' - 0"	F		WD	CLR						
204B.3	2' - 8"	7' - 0"	F		WD	CLR						
204D.3	3' - 0"	7' - 0"	F		WD	CLR						
204E.3	5' - 10"	7' - 6 11/16"	B		WD	CLR	N/A					
204F.3	0' - 0"	0' - 0"			WD	CLR						
204G.3	3' - 0"	7' - 0"	F		WD	CLR						

DOOR SCHEDULE - BUILDING 3												
DOOR NO.	WIDTH	HEIGHT	DOOR TYPE	HARDWARE	DOOR				FRAME			COMMENTS
					MATERIAL	FINISH	GLASS TYPE	FIRE RATING	TYPE	MATERIAL	FINISH	
204H.3	5' - 10"	7' - 6 11/16"	B						WD	CLR	N/A	
204I.3	0' - 0"	0' - 0"							WD	CLR		
204J.3	6' - 0"	8' - 0"										
205B.3	0' - 0"	0' - 0"							WD	CLR		WD
206C.3	0' - 0"	0' - 0"							WD	CLR		WD
207G.3	0' - 0"	0' - 0"							WD	CLR		WD
E201.3	0' - 0"	0' - 0"										
M201.3	4' - 0"	7' - 0"	F		WD	CLR	20 MIN.		HM			
M202.3	4' - 0"	7' - 0"	F		WD	CLR	20 MIN.		HM			
M203.3	4' - 0"	7' - 0"	F		WD	CLR	20 MIN.		WD			
M204.3	4' - 0"	7' - 0"	F		WD	CLR	20 MIN.		HM			
S201.3	3' - 0"	7' - 0"	F		WD	CLR	90 MIN.		HM			
<b>B2 - Level 2</b>												
202G.3	6' - 0"	8' - 0"										
<b>B3 - Level 3</b>												
301.3	3' - 0"	7' - 0"	F		WD	CLR	20 MIN		HM			
301A.3	2' - 4"	7' - 0"	F		WD	CLR			WD			
301B.3	2' - 8"	7' - 0"	F		WD	CLR			WD			
301C.3	3' - 0"	7' - 0"	F		WD	CLR			WD			
301D.3	3' - 0"	7' - 0"	F		WD	CLR			WD			
301E.3	5' - 10"	7' - 6 11/16"	B		WD	CLR	N/A		WD			
301F.3	0' - 0"	0' - 0"			WD	CLR			WD			
302.3	3' - 0"	7' - 0"	F		WD	CLR	20 MIN		HM			
302A.3	2' - 4"	7' - 0"	F		WD	CLR			WD			
302B.3	2' - 8"	7' - 0"	F		WD	CLR			WD			
302C.3	3' - 0"	7' - 0"	F		WD	CLR			WD			
302D.3	3' - 0"	7' - 0"	F		WD	CLR			WD			
302E.3	5' - 10"	7' - 6 11/16"	B		WD	CLR	N/A		WD			
302F.3	0' - 0"	0' - 0"			WD	CLR			WD			
302G.3	0' - 0"	0' - 0"			WD	CLR			WD			
302G.3	6' - 0"	8' - 0"										
303.3	3' - 0"	7' - 0"	F		WD	CLR	20 MIN		WD			
303A.3	2' - 4"	7' - 0"	F		WD	CLR			WD			
303B.3	2' - 8"	7' - 0"	F		WD	CLR			WD			
303C.3	3' - 0"	7' - 0"	F		WD	CLR			WD			
303D.3	5' - 10"	7' - 6 11/16"	B		WD	CLR	N/A		WD			
303E.3	0' - 0"	0' - 0"			WD	CLR			WD			
303F.3	3' - 0"	7' - 0"	F		WD	CLR			WD			
303G.3	3' - 0"	7' - 0"	F		WD	CLR			WD			
303H.3	5' - 10"	7' - 6 11/16"	B		WD	CLR	N/A		WD			
303I.3	0' - 0"	0' - 0"			WD	CLR			WD			
303J.3	3' - 0"	8' - 0"	FG									
304.3	3' - 0"	7' - 0"	F		WD							

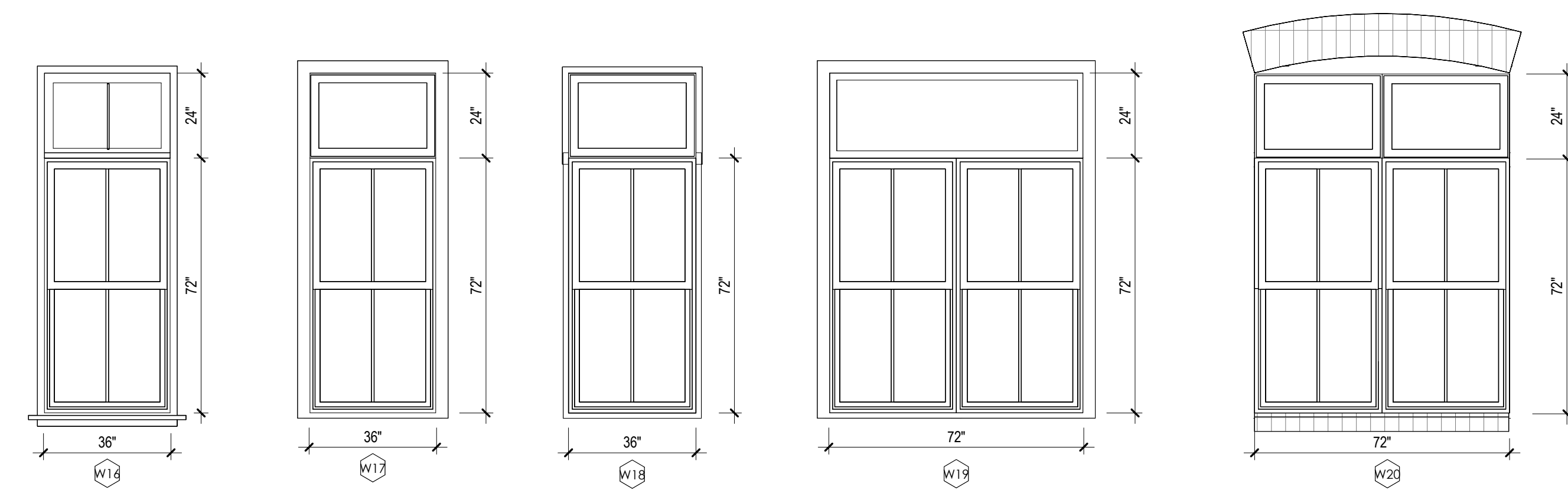




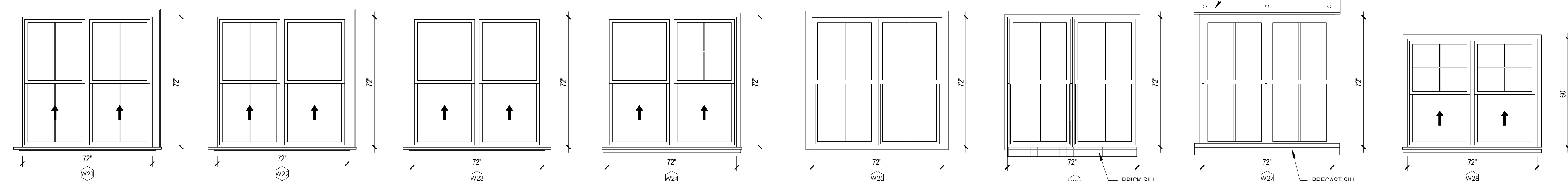
WINDOW MATERIAL: ALUM CLAD TRIM STYLE & COLOR: WIDE & WHITE MUTIN STYLE & COLOR: 2/2 & WHITE  
 WINDOW MATERIAL: ALUM CLAD TRIM STYLE & COLOR: NARROW & WHITE MUTIN STYLE & COLOR: 4/0 & WHITE  
 WINDOW MATERIAL: ALUM CLAD TRIM STYLE & COLOR: WIDE & GREY MUTIN STYLE & COLOR: 2/2 & WHITE  
 WINDOW MATERIAL: ALUM CLAD TRIM STYLE & COLOR: NARROW & BLACK MUTIN STYLE & COLOR: 4/0 & BLACK  
 WINDOW MATERIAL: ALUM CLAD TRIM STYLE & COLOR: WIDE & BLUE MUTIN STYLE & COLOR: 2/2 & WHITE  
 WINDOW MATERIAL: ALUM CLAD TRIM STYLE & COLOR: WIDE & RED MUTIN STYLE & COLOR: 2/2 & BLACK  
 WINDOW MATERIAL: ALUM CLAD TRIM STYLE & COLOR: WIDE & GREY MUTIN STYLE & COLOR: 2/2 & BLACK  
 WINDOW MATERIAL: ALUM CLAD TRIM STYLE & COLOR: BRICK & BLACK MUTIN STYLE & COLOR: 2/2 & BLACK  
 WINDOW MATERIAL: ALUM CLAD TRIM STYLE & COLOR: BRICK & BLACK MUTIN STYLE & COLOR: 2/2 & BLACK



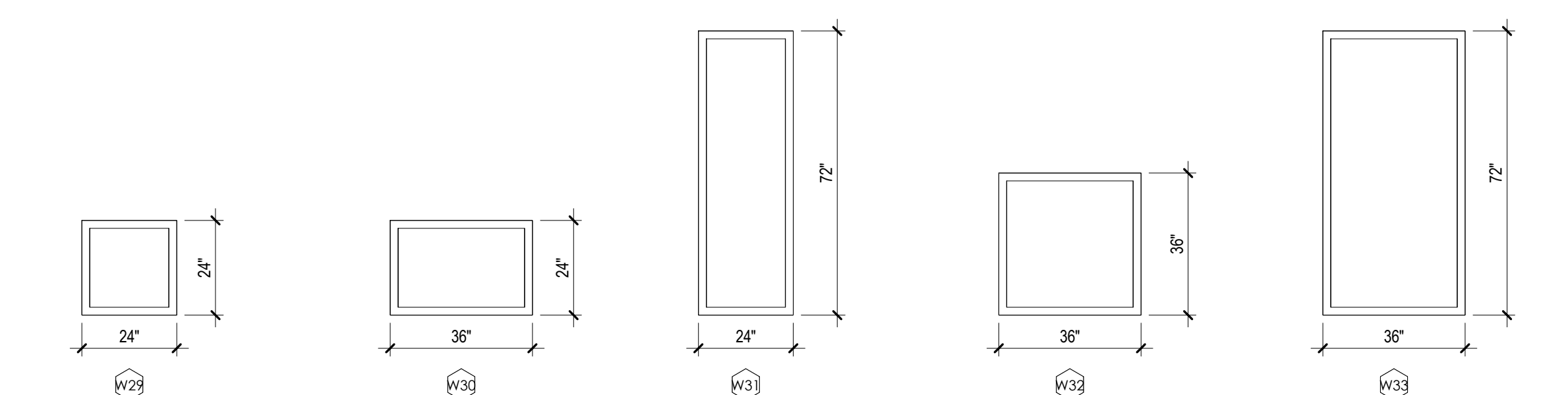
WINDOW MATERIAL: ALUM CLAD TRIM STYLE & COLOR: WIDE & WHITE MUTIN STYLE & COLOR: 4/0 & WHITE  
 WINDOW MATERIAL: ALUM CLAD TRIM STYLE & COLOR: WIDE & BLUE MUTIN STYLE & COLOR: 2/2 & WHITE  
 WINDOW MATERIAL: ALUM CLAD TRIM STYLE & COLOR: NARROW & BLACK MUTIN STYLE & COLOR: 2/2 & BLACK  
 WINDOW MATERIAL: ALUM CLAD TRIM STYLE & COLOR: NARROW & RED MUTIN STYLE & COLOR: 2/2 & RED  
 WINDOW MATERIAL: ALUM CLAD TRIM STYLE & COLOR: NARROW & BLACK MUTIN STYLE & COLOR: 4/0 & BLACK  
 WINDOW MATERIAL: ALUM CLAD TRIM STYLE & COLOR: NARROW & WHITE MUTIN STYLE & COLOR: 4/0 & WHITE



WINDOW MATERIAL: ALUM CLAD TRIM STYLE & COLOR: NARROW & RED MUTIN STYLE & COLOR: 2/2 & RED  
 WINDOW MATERIAL: ALUM CLAD TRIM STYLE & COLOR: WIDE & GREY MUTIN STYLE & COLOR: 2/2 & BLACK  
 WINDOW MATERIAL: ALUM CLAD TRIM STYLE & COLOR: BRICK & BLACK MUTIN STYLE & COLOR: 2/2 & BLACK  
 WINDOW MATERIAL: ALUM CLAD TRIM STYLE & COLOR: WIDE & GREY MUTIN STYLE & COLOR: 2/2 & BLACK  
 WINDOW MATERIAL: ALUM CLAD TRIM STYLE & COLOR: BRICK & BLACK MUTIN STYLE & COLOR: 2/2 & BLACK



WINDOW MATERIAL: ALUM CLAD TRIM STYLE & COLOR: WIDE & WHITE MUTIN STYLE & COLOR: 2/2 & WHITE  
 WINDOW MATERIAL: ALUM CLAD TRIM STYLE & COLOR: WIDE & GREY MUTIN STYLE & COLOR: 2/2 & WHITE  
 WINDOW MATERIAL: ALUM CLAD TRIM STYLE & COLOR: WIDE & BLUE MUTIN STYLE & COLOR: 2/2 & WHITE  
 WINDOW MATERIAL: ALUM CLAD TRIM STYLE & COLOR: NARROW & WHITE MUTIN STYLE & COLOR: 4/0 & WHITE  
 WINDOW MATERIAL: ALUM CLAD TRIM STYLE & COLOR: WIDE & GREY MUTIN STYLE & COLOR: 2/2 & BLACK  
 WINDOW MATERIAL: ALUM CLAD TRIM STYLE & COLOR: BRICK & BLACK MUTIN STYLE & COLOR: 2/2 & BLACK  
 WINDOW MATERIAL: ALUM CLAD TRIM STYLE & COLOR: BRICK & BLACK MUTIN STYLE & COLOR: 2/2 & BLACK  
 WINDOW MATERIAL: ALUM CLAD TRIM STYLE & COLOR: BRICK & BLACK MUTIN STYLE & COLOR: 2/2 & BLACK  
 WINDOW MATERIAL: ALUM CLAD TRIM STYLE & COLOR: NARROW & BLACK MUTIN STYLE & COLOR: 4/0 & BLACK

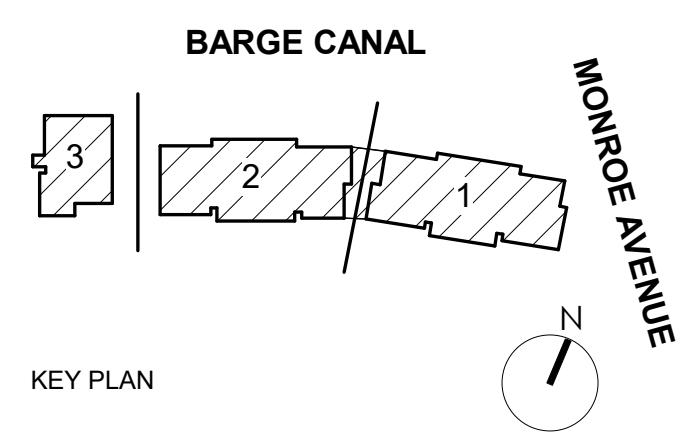


WINDOW MATERIAL: ALUM CLAD TRIM STYLE & COLOR: WIDE & BLACK FIXED PANEL  
 WINDOW MATERIAL: ALUM CLAD TRIM STYLE & COLOR: WIDE & BLACK FIXED PANEL  
 WINDOW MATERIAL: ALUM CLAD TRIM STYLE & COLOR: WIDE & BLACK FIXED PANEL  
 WINDOW MATERIAL: ALUM CLAD TRIM STYLE & COLOR: WIDE & BLACK FIXED PANEL  
 WINDOW MATERIAL: ALUM CLAD TRIM STYLE & COLOR: WIDE & BLACK FIXED PANEL

**WINDOW NOTES:**  
 MANUFACTURER - WEATHER SHEILD  
 MATERIAL - ALUMI CLAD



**ARCHITECTURAL CODE REVIEW SET**



Pittsford Canalside Properties, LLC  
**WESTPORT CROSSING**  
 75 MONROE AVE  
 PITTSFORD, NY 14534

REV. #	DESCRIPTION	DATE

JOB NO.	2101
SCALE	3/8" = 1'-0"
ISSUE DATE	03/09/2023
DRAWN BY	XXX
CHECKED BY	XXX

THIS IS A SINGLE SHEET OF A COHESIVE SET OF CONSTRUCTION DOCUMENTS (INCLUDING DRAWINGS AND SPECIFICATIONS). INTERPRETATION OF THE INFORMATION AS PRESENTED SHOULD BE BASED ON THE ENTIRE SET OF DOCUMENTS.

DRAWING TITLE  
**WINDOW AND GRILLE TYPES**

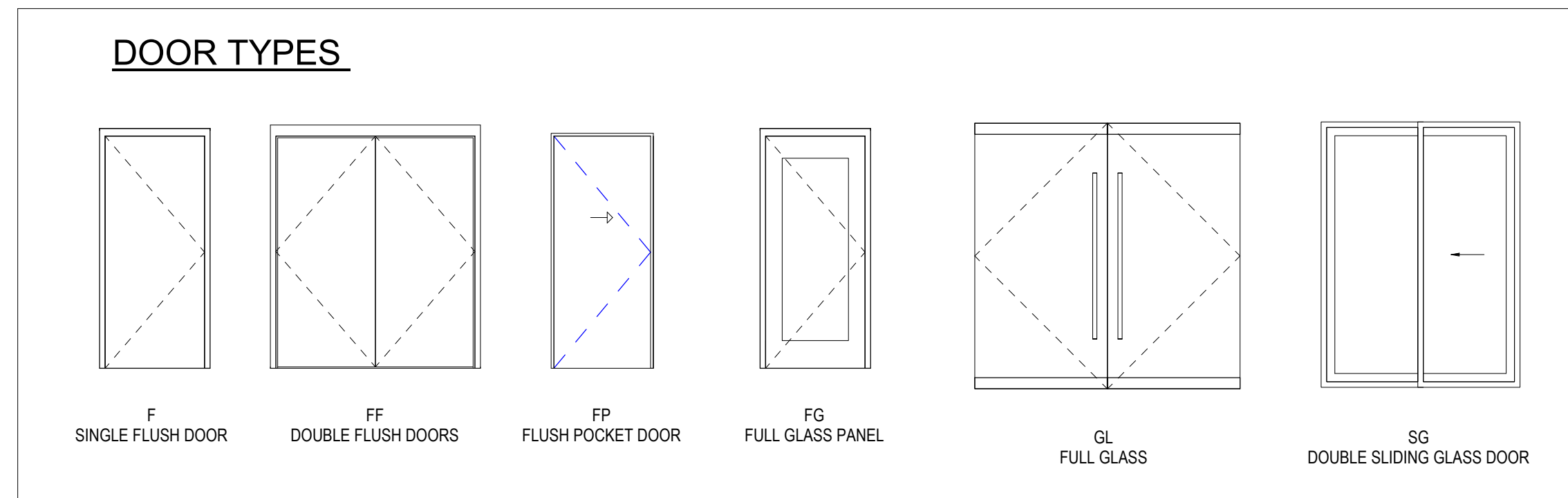
**AT002**

ISSUED FOR ARCHITECTURAL AND CODE REVIEW

**HARDWARE SCHEDULE**

SET	QUANTITY	DESCRIPTION	FINISH	REMARKS
1.0	2 EA 2 PAIR 2 EA 2 EA 2 EA 1 EA 1 EA 2 EA 1 EA	CONTINUOUS GEARED HINGES VERTICAL LADDER STYLE PULLS ELECTROMAGNETIC LOCKS PANIC EXIT DEVICE CONCEALED CLOSERS ADA THRESHOLD PERIMETER GASKETING KIT CONCEALED SILL SWEEP STRIP CARD READER	USXX	MAIN ENTRY - EXTERIOR
1.1	2 EA 2 PAIR 2 EA 2 EA 1 EA 1 EA 2 EA	CONTINUOUS GEARED HINGES VERTICAL LADDER STYLE PULLS PANIC EXIT DEVICE CONCEALED CLOSERS ADA THRESHOLD PERIMETER GASKETING KIT CONCEALED SILL SWEEP STRIP	USXX	MAIN ENTRY - INTERIOR VESTIBULE
2.0	1-1/2 PAIRS 1 1 1 3	BUTT HINGES MORTISE LOCKSET; OFFICE FUNCTION STRIKE WALL MOUNTED STOP SILENCERS	USXX	OFFICE / CONFERENCE
3.0	1-1/2 PAIRS 1 1 1 3 1	BUTT HINGES MORTISE LOCKSET; PRIVACY FUNCTION W/ OCCUPANCY INDICATOR STRIKE SURFACE MOUNTED CLOSER WALL MOUNTED STOP SILENCERS COAT HOOK	USXX	SINGLE OCCUPANT TOILET ROOM
4.0	2 PAIRS 2 PAIRS 2 1 PAIRS 2 1 1	TOP & BOTTOM PIVOT HINGES TOP & BOTTOM RAILS ELECTROMAGNETIC LOCKS VERTICAL PUSH/PULL BARS CONCEALED CLOSERS CARD READER MOTION SENSOR RELEASE	USXX	EXERCISE ROOM
5.0	2 PAIRS 2 PAIRS 2 1 PAIRS 2 1 1	TOP & BOTTOM PIVOT HINGES TOP & BOTTOM RAILS ELECTROMAGNETIC LOCKS VERTICAL PUSH/PULL BARS CONCEALED CLOSERS CARD READER MOTION SENSOR RELEASE	USXX	COMMUNITY ROOM
6.0	1 1/2 PAIRS 1 1 1 1 1 3 1 1 1 1	BUTT HINGES MORTISE LOCKSET; ENTRY FUNCTION ELECTRIC STRIKE PANIC EXIT DEVICE SURFACE MOUNTED CLOSER WALL MOUNTED STOP SILENCERS PERIMETER GASKET KIT DOOR SWEEP ADA THRESHOLD CARD READER	USXX	BIKE ROOM/ GARAGE VESTIBULE - EXTERIOR
6.1	1 1/2 PAIRS 1 1 1 1 1 3 1	BUTT HINGES MORTISE LOCKSET; ENTRY FUNCTION ELECTRIC STRIKE PANIC EXIT DEVICE SURFACE MOUNTED CLOSER WALL MOUNTED STOP SILENCERS CARD READER	USXX	GARAGE VESTIBULE - INTERIOR
6.2	1 1/2 PAIRS 1 1 1 1 3 1	BUTT HINGES MORTISE LOCKSET; ENTRY FUNCTION ELECTRIC STRIKE SURFACE MOUNTED CLOSER WALL MOUNTED STOP SILENCERS CARD READER	USXX	BIKE ROOM/ GARAGE VESTIBULE - INTERIOR
7.0	1 1/2 PAIRS 1 1 1 1 3 1	BUTT HINGES MORTISE LOCKSET; ENTRY FUNCTION ELECTRIC STRIKE SURFACE MOUNTED CLOSER ADA THRESHOLD SILENCERS CARD READER	USXX	GARAGE SWING DOOR
8.0	1 1/2 PAIRS 1 1 1 3	BUTT HINGES MORTISE LOCKSET; STOREROOM FUNCTION STRIKE WALL MOUNTED STOP SILENCERS	USXX	MECHANICAL ROOM
9.0	2 PAIRS 1 1 1 3 1	BUTT HINGES MORTISE PASSAGE SET STRIKE SURFACE MOUNTED CLOSER WALL MOUNTED STOP SILENCERS ARMOR PLATE	USXX	TRASH ROOM
10.0	3 PAIRS 1 1 1 SET 6	BUTT HINGES MORTISE LOCKSET; STOREROOM FUNCTION STRIKE TOP & BOTTOM MANUAL FLUSH BOLTS PERIMETER GASKET KIT THRESHOLD	USXX	MECHANICAL ROOM (EXTERIOR)
11.0	1 1/2 PAIRS 1 1 2 3	BUTT HINGES MORTISE LOCKSET; STOREROOM FUNCTION BATTERY POWERED ESCUTCHEON FAB READER STRIKE SURFACE MOUNTED CLOSER WALL MOUNTED STOP SILENCERS	USXX	TENANT STORAGE
12.0	1-1/2 PAIRS 1 1 1 1 1 SET 1	BUTT HINGES MORTISE LOCKSET; EXIT FUNCTION STRIKE PANIC EXIT DEVICE SURFACE MOUNTED CLOSER WALL MOUNTED STOP PERIMETER GASKETS KIT BOTTOM SWEEP	USXX	STAIRWELL
13.0	1-1/2 PAIRS 1 1 1 1 1	BUTT HINGES MORTISE LOCKSET; EXIT FUNCTION - NO HANDLE/TRIM ON EXTERIOR SIDE PANIC EXIT DEVICE STRIKE SURFACE MOUNTED CLOSER PERIMETER GASKETS KIT BOTTOM SWEEP	USXX	DISCHARGE
14.0	1-1/2 PAIRS 1 1 1 1	BUTT HINGES MORTISE LOCKSET; LATCH BOLT STRIKE ADA THRESHOLD PERIMETER GASKETS KIT DOOR SWEEP	USXX	TERRACE

SET	QUANTITY	DESCRIPTION	FINISH	REMARKS
15.0	1-1/2 PAIRS 1 1 1 1 3	BUTT HINGES MORTISE LOCKSET; APARTMENT ENTRANCE FUNCTION WITH BATTERY POWERED ESCUTCHEON FAB READER DEADBOLT STRIKE SURFACE MOUNTED CLOSER WALL MOUNTED STOP SILENCERS PEEPHOLE	622	UNIT ENTRANCE
16.0	1-1/2 PAIRS 1 1 1 3	BUTT HINGES MORTISE LOCKSET; PASSAGE FUNCTION STRIKE WALL MOUNTED STOP SILENCERS		UNIT CLOSET
17.0	1-1/2 PAIRS 1 1 1 3	BUTT HINGES MORTISE LOCKSET; PRIVACY FUNCTION STRIKE WALL MOUNTED STOP SILENCERS		UNIT BEDROOM / BATHROOM
18.0	1-1/2 PAIRS 1 1	BUTT HINGES KEYED CYLINDER DEADBOLT STRIKE		CORRIDOR MECHANICAL CLOSETS
19.0	2 PAIRS 1	BUTT HINGES MAGNETIC LOCKS		LOFT LAUNDRY



**GENERAL DOOR/ FRAME/ HARDWARE NOTES**

- HARDWARE MFR AND PRODUCTS TBD- REFER TO HARDWARE TYPE AND CORRESPONDING HEADING IN SPEC SECTION 087100. DOOR HARDWARE FOR GENERAL DESCRIPTION OF HARDWARE FUNCTION AND COMPONENTS. SUCCESSFUL BIDDER ON DOOR HARDWARE SCOPE OF WORK TO SUBMIT HARDWARE SETS AND PRODUCT DATA FOR REVIEW AND APPROVAL BY ARCHITECT, OWNER AND CONSTRUCTION MANAGER.
- ALL HARDWARE TO BE ADA & BCNYS COMPLIANT.
- UNIT ENTRY DOORS TO RECEIVE HARDWARE WITH A DEADBOLT INTERCONNECTED WITH THE DOOR LEVER TO ALLOW FOR EGRESS.
- ALL FIRE RATED DOORS TO BE ADEQUATELY SMOKE SEALED PER BCNYS REQUIREMENTS.
- ALL FIRE RATED DOORS TO BE SELF CLOSING/ LATCHING.
- ALL DOORS INDICATED TO RECEIVE CARD READERS ARE TO BE TIED INTO THE FIRE ALARM SYSTEM & TO BE UNLOCKED UPON A FIRE ALARM SCENARIO.
- PROVIDE MAGNETIC HOLD OPENS TIED INTO FIRE ALARM, DOOR TO CLOSE UPON ACTIVATION OF ALARM.
- DOORS SERVING EGRESS FROM ANY SPACE SHALL NOT LOCK OR PREVENT EXITING FROM THE BUILDING.
- ALL GLAZING WITHIN 'HAZARDOUS LOCATIONS' REQUIRE SAFETY GLAZING.

**UNIT INTERIOR DOOR/ FRAME/ HARDWARE NOTES**

- HARDWARE MFR AND PRODUCTS TBD- REFER TO HARDWARE TYPE AND CORRESPONDING HEADING IN SPEC SECTION 087100. 'DOOR HARDWARE' FOR GENERAL DESCRIPTION OF HARDWARE FUNCTION AND COMPONENTS. SUCCESSFUL BIDDER ON DOOR HARDWARE SCOPE OF WORK TO SUBMIT HARDWARE SETS AND PRODUCT DATA FOR REVIEW AND APPROVAL BY ARCHITECT, OWNER AND CONSTRUCTION MANAGER.
- ALL HARDWARE TO BE ADA & BCNYS COMPLIANT.
- ALL UNIT DOORS (EXCLUDING ENTRY DOORS) TO BE WOOD JAMB/ HEAD DETAILS WITH FIELD APPLIED CASINGS. INTERIOR DESIGNER TO SELECT DOOR FINISH/ COLOR AND STYLE.

**DOOR/ FRAME FINISH LEGEND**

- PRIMED AND PAINTED - COLOR BY INTERIOR DESIGNER
- STAIN AND CLEAR COAT - FINISH BY INTERIOR DESIGNER

**GLAZING TYPES**

- GL-1 FLOAT GLASS
- GL-2 TEMPERED SAFETY GLASS
- GL-3 FIRE RATED GLASS

**DOOR MATERIAL TYPES**

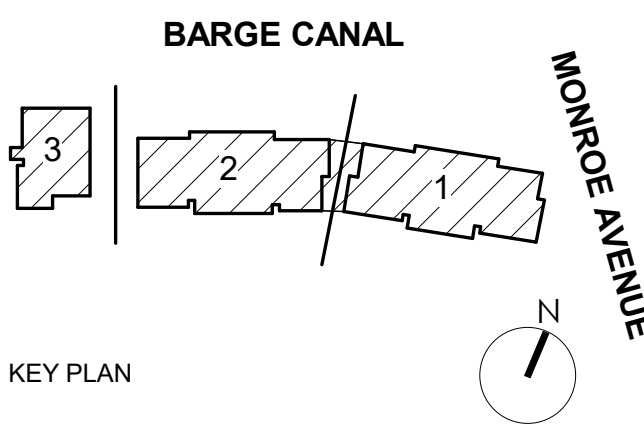
- |     |                             |
|-----|-----------------------------|
| CWD | COMPOSITE WOOD              |
| HM  | HOLLOW METAL                |
| SWD | SOLID WOOD                  |
| MWD | ALUM. METAL CLAD SOLID WOOD |



BUFFALO | ROCHESTER  
www.cjsarchitects.com



**ARCHITECTURAL CODE REVIEW SET**



Pittsford Canalside Properties, LLC

**WESTPORT CROSSING**

75 MONROE AVE  
PITTSFORD, NY 14534

REV. #	DESCRIPTION	DATE

JOB NO. 2101

SCALE 1/4" = 1'-0"

ISSUE DATE 03/09/2023

DRAWN BY XXX

CHECKED BY XXX

THIS IS A SINGLE SHEET OF A COHESIVE SET OF CONSTRUCTION DOCUMENTS (INCLUDING DRAWINGS AND SPECIFICATIONS). INTERPRETATION OF THE INFORMATION AS PRESENTED SHOULD BE BASED ON THE ENTIRE SET OF DOCUMENTS.

DRAWING TITLE

**DOOR HARDWARE, TYPES & NOTES**

**AT007**

ISSUED FOR ARCHITECTURAL AND CODE REVIEW